

“Stay Connected” with



Venting Solutions

a PennEngineering® Company



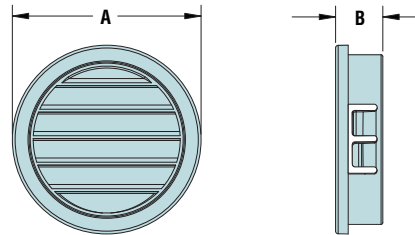
- Louvers permit the passage of air for ventilation but limit liquid infiltration.
- Suitable for ventilation in electronic enclosures, motor housings and metal or plastic panels.
- Quick and easy installation with flexible orientation of louver direction.
- Withstand a push back force of 35 lbs. (47 Nm).
- Lock firmly into panel up to .250" (6,4 mm) thick.
- Locking fingers in fractional increments up to the maximum panel thickness.
- Heyco Vent Plugs, Heyco Thick Panel Vent Plugs, and Heyco Liquid Tight Threaded Vent Plugs also available.

## Heyco® Louvered Plugs

Mounting Hole Diameter Range: .875" (22,2 mm) to 3.000" (76,2 mm)

MOUNTING HOLE DIAMETER		PART NO. Black	DESCRIPTION	PART DIMENSIONS			
in.	mm.			A Head Diameter		B Overall Height	
Multiple Locking Steps for Panel Thickness up to .125" (3,2 mm)							
.875	22,2	2557	LP 875	1.02	25,8	.53	13,5
1.000	25,4	2559	LP 1000	1.21	30,6		
1.093 - 1.125	27,8 - 28,6	2561	LP 1093	1.22	30,9	.54	13,8
1.375	34,9	2567	LP 1375	1.50	38,1		
1.500	38,1	2569	LP 1500	1.68	42,6		
2.000	50,8	2594	LP 2000	2.17	55,1		
Multiple Locking Steps for Panel Thickness up to .250" (6,4 mm)							
2.500	63,5	2596	LP 2.5	2.72	69,0	.82	20,9
3.000	76,2	2598	LP 3.0	3.17	80,5		

Standard color black. Consult Heyco for other colors.



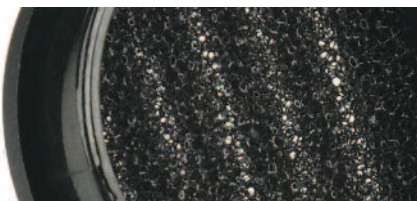
- Located behind the louvers, filter inserts permit the passage of air for ventilation but limit liquid as well as dust and pest infiltration.
- Polyurethane foam filter will filter particle sizes 30 micron and larger.

## HEYClean™ Filter Insert Louvered Plugs

Mounting Hole Diameter Range: .875" (22,2 mm) to 3.000" (76,2 mm)

MOUNTING HOLE DIAMETER		PART NO. Black	DESCRIPTION	PART DIMENSIONS			
in.	mm.			A Head Diameter		B Overall Height	
Multiple Locking Steps for Panel Thickness up to .125" (3,2 mm)							
.875	22,2	4947	FILP 875	1.02	25,8	.53	13,5
1.000	25,4	4949	FILP 1000	1.21	30,6		
1.093 - 1.125	27,8 - 28,6	4951	FILP 1093	1.22	30,9	.54	13,8
1.375	34,9	4957	FILP 1375	1.50	38,1		
1.500	38,1	4959	FILP 1500	1.68	42,6		
2.000	50,8	4963	FILP 2000	2.17	55,1		
Multiple Locking Steps for Panel Thickness up to .250" (6,4 mm)							
2.500	63,5	4965	FILP 2.5	2.72	69,0	.82	20,9
3.000	76,2	4967	FILP 3.0	3.17	80,5		

Standard color black. Consult Heyco for other colors.



Quick  
Specs

Material	Nylon 6/6
Flammability Rating	94V-2
Temperature Range	-40°F (-40°C) to 221°F (105°C)