

“Stay Connected” with

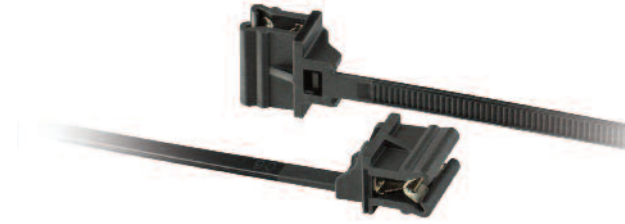


HEYware Products

a PennEngineering® Company

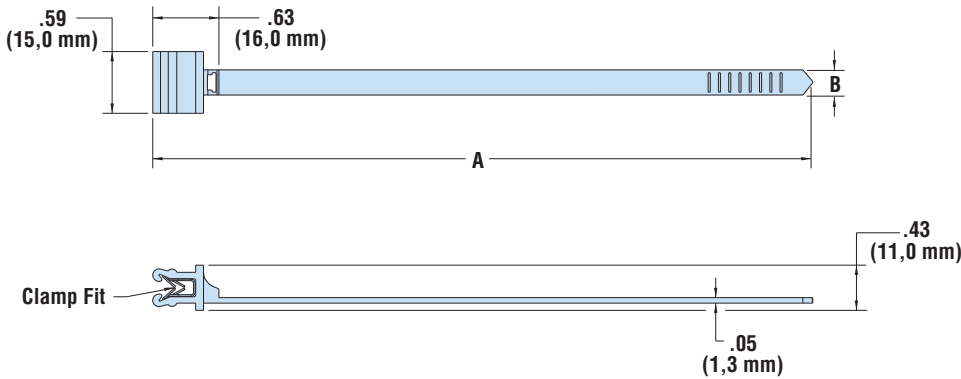
## Heyco® Edge Clip

Molded One-Piece with 6" Cable Tie



CABLE TIE SPECIFICATIONS				PART No. Black	DESCRIPTION	Cable Tie Orientation	PART DIMENSIONS							
Tensile Strength		Max. Bundle Diameter					A Length	B Width	Min. Panel Thickness		Max. Panel Thickness			
Lbs.	N	in.	mm.			in.	mm.	in.	mm.	in.	mm.	in.	mm.	
For Panels from .04" (1,0 mm) to .12" (3,0 mm) Thick														
50	222	1.57	40,0	15214	EC13SMPEUA6	Perpendicular	6.3	160,0	.19	4,8	.04	1,0	.12	3,0

- Steel clip provides high panel retention forces, while requiring low insertion force.
- Plastic housing ensures easy, ergonomic installation.
- Ideal solution for applications where holes are not available or temperatures are too extreme for adhesive solutions.
- Parallel orientation means the cable tie is parallel to the fixing edge.
- Perpendicular orientation means the cable tie is perpendicular to the fixing edge.



Material Nylon 6/6 UV Resistant and Heat Stabilized  
 Flammability Rating 94V-2  
 Temperature Range -.04°F (-18°C) to 221°F (105°C)

Quick  
Specs