

HEYware  
Rivets and  
Fasteners  
– 2015 –



a PennEngineering® Company



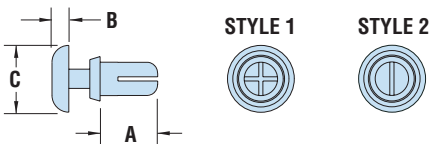
“Stay Connected with” HEYware



## HEYClip™ Snap Rivets

- Designed for **fast and easy installation with no tools** - just fingertip pressure required.
- Simply place rivet into the hole and press down on the head to fasten; legs expand to securely fasten components.
- To release, simply pull up on rivet head section.
- Round head provides a clean, finished look.
- Part Description Key: PR X-Y where X = Mounting Hole Diameter (inches) and Y = minimum Panel Thickness (inches).
- Standard Material: Nylon 6. Nylon 6/6 UL 94V-0 available by special order, consult Heyco.
- Standard Pack - 1,000/bag.

| WILL FIT THESE PANELS |                           |     |       | PART NO. |             |          | DESCRIPTION | PART DIMENSIONS |            |                 |      |     |       | EXTRACTION FORCE |     |     |      |
|-----------------------|---------------------------|-----|-------|----------|-------------|----------|-------------|-----------------|------------|-----------------|------|-----|-------|------------------|-----|-----|------|
| MOUNTING HOLE DIA.    | ASSEMBLED PANEL THICKNESS |     | Black | White    | V-0 Black * | A Length |             | B Head Height   |            | C Head Diameter |      | N   | Style |                  |     |     |      |
|                       | in.                       | mm. |       |          |             | Min.     | Max.        | in.             | mm.        | in.             | mm.  |     |       | in.              | mm. |     |      |
| <b>PR Series</b>      |                           |     |       |          |             |          |             |                 |            |                 |      |     |       |                  |     |     |      |
| .083                  | 2,1                       | .02 | 0,6   | .05      | 1,2         | 9296     | 9297        | 9296F           | PR 083-024 | .10             | 2,4  |     |       |                  |     |     |      |
|                       |                           | .05 | 1,3   | .08      | 2,0         | 9300     | 9301        | 9300F           | PR 083-051 | .13             | 3,2  |     |       |                  |     |     |      |
|                       |                           | .08 | 2,1   | .11      | 2,8         | 9302     | 9303        | 9302F           | PR 083-083 | .16             | 4,0  | .05 | 1,2   | .17              | 4,2 | 29  | 2    |
|                       |                           | .11 | 2,9   | .14      | 3,6         | 9304     | 9305        | 9304F           | PR 083-114 | .19             | 4,8  |     |       |                  |     |     |      |
|                       |                           | .15 | 3,7   | .17      | 4,4         | 9306     | 9307        | 9306F           | PR 083-146 | .22             | 5,6  |     |       |                  |     |     |      |
|                       |                           | .17 | 4,4   | .20      | 5,0         | 9308     | 9309        | 9308F           | PR 083-173 | .25             | 6,4  |     |       |                  |     |     |      |
|                       |                           | .08 | 2,1   | .08      | 2,0         | 9020     | 9021        | 9020F           | PR 102-039 | .13             | 3,2  |     |       |                  |     |     |      |
| .102                  | 2,6                       | .08 | 2,0   | .12      | 3,0         | 9022     | 9023        | 9022F           | PR 102-082 | .17             | 4,2  |     |       |                  |     |     |      |
|                       |                           | .11 | 2,7   | .14      | 3,6         | 9024     | 9025        | 9024F           | PR 102-106 | .19             | 4,8  |     |       |                  |     |     |      |
|                       |                           | .13 | 3,4   | .17      | 4,3         | 9026     | 9027        | 9026F           | PR 102-134 | .22             | 5,6  | .06 | 1,4   | .20              | 5,0 | 49  | 2    |
|                       |                           | .17 | 4,3   | .21      | 5,2         | 9310     | 9311        | 9310F           | PR 102-169 | .25             | 6,4  |     |       |                  |     |     |      |
|                       |                           | .20 | 5,1   | .24      | 6,0         | 9312     | 9313        | 9312F           | PR 102-201 | .28             | 7,2  |     |       |                  |     |     |      |
|                       |                           | .13 | 3,4   | .17      | 4,3         | 19000    | 19001       | 19000F          | PR 106-133 | .23             | 5,9  | .06 | 1,5   | .20              | 5,0 | 49  |      |
|                       |                           | .14 | 3,5   | .18      | 4,6         | 19002    | 19003       | 19002F          | PR 118-137 | .30             | 7,5  | .07 | 1,7   | .24              | 6,2 | 122 | 2    |
| .122                  | 3,1                       | .14 | 3,5   | .22      | 5,5         | 19004    | 19005       | 19004F          | PR 118-138 | .31             | 8,0  | .06 | 1,6   | .24              | 6,2 |     | NEW! |
|                       |                           | .04 | 1,0   | .08      | 2,0         | 9028     | 9029        | 9028F           | PR 122-039 | .14             | 3,5  |     |       |                  |     |     |      |
|                       |                           | .08 | 2,0   | .12      | 3,0         | 9030     | 9031        | 9030F           | PR 122-079 | .18             | 4,5  |     |       |                  |     |     |      |
|                       |                           | .12 | 3,0   | .16      | 4,0         | 9032     | 9033        | 9032F           | PR 122-118 | .22             | 5,6  |     |       |                  |     |     |      |
|                       |                           | .16 | 4,0   | .19      | 5,0         | 9034     | 9035        | 9034F           | PR 122-157 | .26             | 6,5  |     |       |                  |     |     |      |
|                       |                           | .20 | 5,0   | .24      | 6,0         | 9036     | 9037        | 9036F           | PR 122-197 | .30             | 7,5  | .06 | 1,6   | .25              | 6,4 | 78  | 2    |
|                       |                           | .22 | 5,5   | .26      | 6,5         | 9038     | 9039        | 9038F           | PR 122-217 | .32             | 8,0  |     |       |                  |     |     |      |
|                       |                           | .26 | 6,5   | .30      | 7,5         | 9040     | 9041        | 9040F           | PR 122-256 | .35             | 9,0  |     |       |                  |     |     |      |
|                       |                           | .30 | 7,5   | .34      | 8,5         | 9042     | 9043        | 9042F           | PR 122-295 | .39             | 10,0 |     |       |                  |     |     |      |
|                       |                           | .45 | 11,5  | .51      | 13,0        | 9314     | 9315        | 9314F           | PR 122-453 | .57             | 14,5 |     |       |                  |     |     |      |
| .81                   | 20,5                      | .85 | 21,5  | 9316     | 9317        | 9316F    | PR 122-807  | .91             | 23,0       |                 |      |     |       |                  |     |     |      |
| .142                  | 3,6                       | .05 | 1,2   | .08      | 2,1         | 9044     | 9045        | 9044F           | PR 142-047 | .14             | 3,5  |     |       |                  |     |     |      |
|                       |                           | .08 | 2,1   | .12      | 3,0         | 9046     | 9047        | 9046F           | PR 142-083 | .18             | 4,5  |     |       |                  |     |     |      |
|                       |                           | .11 | 2,7   | .14      | 3,6         | 9048     | 9049        | 9048F           | PR 142-106 | .20             | 5,0  |     |       |                  |     |     |      |
|                       |                           | .12 | 3,0   | .16      | 4,0         | 9050     | 9051        | 9050F           | PR 142-118 | .22             | 5,6  | .06 | 1,6   | .25              | 6,4 | 118 | 1    |
|                       |                           | .15 | 3,7   | .18      | 4,6         | 9052     | 9053        | 9052F           | PR 142-146 | .24             | 6,0  |     |       |                  |     |     |      |
|                       |                           | .18 | 4,5   | .22      | 5,5         | 9054     | 9055        | 9054F           | PR 142-177 | .28             | 7,0  |     |       |                  |     |     |      |
|                       |                           | .22 | 5,5   | .26      | 6,5         | 9056     | 9057        | 9056F           | PR 142-217 | .32             | 8,0  |     |       |                  |     |     |      |
|                       |                           | .09 | 2,2   | .11      | 2,8         | 19006    | 19007       | 19006F          | PR 157-086 | .22             | 5,5  | .08 | 2,1   | .31              | 7,9 | 196 | 1    |
| .157                  | 4,0                       | .21 | 5,4   | .24      | 6,0         | 19008    | 19009       | 19008F          | PR 157-212 | .31             | 7,8  | .07 | 1,8   | .32              | 8,1 |     | NEW! |
|                       |                           | .41 | 10,5  | .45      | 11,5        | 19010    | 19011       | 19010F          | PR 157-413 | .53             | 13,4 | .08 | 2,0   | .31              | 8,0 | 196 | 2    |
| .161                  | 4,1                       | .10 | 2,5   | .14      | 3,5         | 9058     | 9059        | 9058F           | PR 161-098 | .20             | 5,0  |     |       |                  |     |     |      |
|                       |                           | .14 | 3,5   | .18      | 4,5         | 9060     | 9061        | 9060F           | PR 161-138 | .24             | 6,0  |     |       |                  |     |     |      |
|                       |                           | .18 | 4,5   | .22      | 5,5         | 9062     | 9063        | 9062F           | PR 161-177 | .28             | 7,0  |     |       |                  |     |     |      |
|                       |                           | .22 | 5,5   | .26      | 6,5         | 9064     | 9065        | 9064F           | PR 161-217 | .32             | 8,0  |     |       |                  |     |     |      |
|                       |                           | .26 | 6,5   | .30      | 7,5         | 9066     | 9067        | 9066F           | PR 161-256 | .35             | 9,0  | .07 | 1,8   | .32              | 8,0 | 196 | 1    |
|                       |                           | .30 | 7,5   | .34      | 8,5         | 9068     | 9069        | 9068F           | PR 161-295 | .39             | 10,0 |     |       |                  |     |     |      |
|                       |                           | .35 | 9,0   | .41      | 10,5        | 9318     | 9319        | 9318F           | PR 161-354 | .47             | 12,0 |     |       |                  |     |     |      |
|                       |                           | .49 | 12,5  | .55      | 14,0        | 9320     | 9321        | 9320F           | PR 161-492 | .61             | 15,5 |     |       |                  |     |     |      |



Standard colors black and white.  
\*Black nylon 6/6 UL 94V-0.

Quick Specs

|                     |                              |
|---------------------|------------------------------|
| Material            | Nylon 6 UL V-2               |
| Flammability Rating | 94V-2                        |
| Temperature Range   | -4°F (-18°C) to 185°F (85°C) |

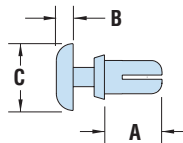
“Stay Connected with” HEYware



## HEYClip™ Snap Rivets – continued

| WILL FIT THESE PANELS ASSEMBLED |     |                 |      |     | PART NO. |             |             | DESCRIPTION  | PART DIMENSIONS |     |               |     |                 |     | EXTRACTION FORCE |       |     |
|---------------------------------|-----|-----------------|------|-----|----------|-------------|-------------|--------------|-----------------|-----|---------------|-----|-----------------|-----|------------------|-------|-----|
| MOUNTING HOLE DIA.              |     | PANEL THICKNESS |      |     | Black    | White       | V-0 Black * |              | A Length        |     | B Head Height |     | C Head Diameter |     | N                | Style |     |
| in.                             | mm. | Min.            | Max. | in. |          |             |             | mm.          | in.             | mm. | in.           | mm. | in.             | mm. |                  |       |     |
| <b>PR Series</b>                |     |                 |      |     |          |             |             |              |                 |     |               |     |                 |     |                  |       |     |
| .201                            | 5,1 | .06             | 1,5  | .10 | 2,5      | <b>9070</b> | <b>9071</b> | <b>9070F</b> | PR 201-059      | .18 | 4,5           |     |                 |     |                  | 1     |     |
|                                 |     | .10             | 2,5  | .14 | 3,5      | <b>9072</b> | <b>9073</b> | <b>9072F</b> | PR 201-098      | .22 | 5,6           |     |                 |     |                  |       |     |
|                                 |     | .14             | 3,5  | .18 | 4,5      | <b>9074</b> | <b>9075</b> | <b>9074F</b> | PR 201-138      | .26 | 6,5           |     |                 |     |                  |       |     |
|                                 |     | .18             | 4,5  | .22 | 5,5      | <b>9076</b> | <b>9077</b> | <b>9076F</b> | PR 201-177      | .30 | 7,5           | .09 | 2,2             | .35 | 9,0              |       | 245 |
|                                 |     | .22             | 5,5  | .26 | 6,5      | <b>9078</b> | <b>9079</b> | <b>9078F</b> | PR 201-217      | .34 | 8,5           |     |                 |     |                  |       |     |
|                                 |     | .26             | 6,5  | .30 | 7,5      | <b>9080</b> | <b>9081</b> | <b>9080F</b> | PR 201-256      | .37 | 9,5           |     |                 |     |                  |       |     |
| .232                            | 5,9 | .30             | 7,5  | .34 | 8,5      | <b>9082</b> | <b>9083</b> | <b>9082F</b> | PR 201-295      | .41 | 10,5          |     |                 |     |                  |       |     |
|                                 |     | .12             | 3,0  | .16 | 4,0      | <b>9322</b> | <b>9323</b> | <b>9322F</b> | PR 232-118      | .25 | 6,3           | .11 | 2,7             | .47 | 12,0             | 245   |     |
| .240                            | 6,1 | .10             | 2,5  | .16 | 4,0      | <b>9084</b> | <b>9085</b> | <b>9084F</b> | PR 240-098      | .24 | 6,0           | .10 | 2,5             |     |                  | 294   |     |
|                                 |     | .14             | 3,5  | .22 | 5,5      | <b>9324</b> | <b>9325</b> | <b>9324F</b> | PR 240-138      | .32 | 8,0           | .12 | 3,0             | .47 | 12,0             |       |     |

Standard colors black and white.  
\*Black nylon 6/6 UL 94V-0.



STYLE 1



STYLE 2



- Designed for **fast and easy installation with no tools** - just fingertip pressure required.
- Simply place rivet into the hole and press down on the head to fasten; legs expand to securely fasten components.
- To release, simply pull up on rivet head section.
- Round head provides a clean, finished look.
- Part Description Key: PR X-Y where X = Mounting Hole Diameter (inches) and Y = minimum Panel Thickness (inches).
- Standard Material: Nylon 6. Nylon 6/6 UL 94V-0 available by special order, consult Heyco.
- Standard Pack - 1,000/bag.
- See Quick Specs on opposite page.

## HEYClip™ Heat Resistant Snap Rivets

| WILL FIT THESE PANELS ASSEMBLED |     |                 |      |     | PART NO.              |              |  | DESCRIPTION       | PART DIMENSIONS |      |               |     |                 |     | EXTRACTION FORCE |       |
|---------------------------------|-----|-----------------|------|-----|-----------------------|--------------|--|-------------------|-----------------|------|---------------|-----|-----------------|-----|------------------|-------|
| MOUNTING HOLE DIA.              |     | PANEL THICKNESS |      |     | Tan Nylon 4/6 UL94V-2 |              |  |                   | A Length        |      | B Head Height |     | C Head Diameter |     | N                | Style |
| in.                             | mm. | Min.            | Max. | in. |                       |              |  | mm.               | in.             | mm.  | in.           | mm. | in.             | mm. |                  |       |
| <b>PR Tan Series</b>            |     |                 |      |     |                       |              |  |                   |                 |      |               |     |                 |     |                  |       |
| .122                            | 3,1 | .04             | 1,0  | .08 | 2,0                   | <b>9028H</b> |  | PR 122-039 HR Tan | .14             | 3,5  |               |     |                 |     | 78               | 2     |
|                                 |     | .08             | 2,0  | .12 | 3,0                   | <b>9030H</b> |  | PR 122-079 HR Tan | .18             | 4,5  | .06           | 1,6 | .25             | 6,4 |                  |       |
|                                 |     | .12             | 3,0  | .16 | 4,0                   | <b>9032H</b> |  | PR 122-118 HR Tan | .22             | 5,6  |               |     |                 |     |                  |       |
|                                 |     | .16             | 4,0  | .19 | 5,0                   | <b>9034H</b> |  | PR 122-157 HR Tan | .26             | 6,5  |               |     |                 |     |                  |       |
|                                 |     | .22             | 5,5  | .26 | 6,5                   | <b>9038H</b> |  | PR 122-217 HR Tan | .32             | 8,0  |               |     |                 |     |                  |       |
| .142                            | 3,6 | .05             | 1,2  | .08 | 2,1                   | <b>9044H</b> |  | PR 142-047 HR Tan | .14             | 3,5  |               |     |                 |     | 118              | 1     |
|                                 |     | .08             | 2,1  | .12 | 3,0                   | <b>9046H</b> |  | PR 142-083 HR Tan | .18             | 4,5  | .06           | 1,6 | .25             | 6,4 |                  |       |
|                                 |     | .11             | 2,7  | .14 | 3,6                   | <b>9048H</b> |  | PR 142-106 HR Tan | .20             | 5,0  |               |     |                 |     |                  |       |
|                                 |     | .12             | 3,0  | .16 | 4,0                   | <b>9050H</b> |  | PR 142-118 HR Tan | .22             | 5,6  |               |     |                 |     |                  |       |
| .161                            | 4,1 | .10             | 2,5  | .14 | 3,5                   | <b>9058H</b> |  | PR 161-098 HR Tan | .20             | 5,0  |               |     |                 |     | 196              | 1     |
|                                 |     | .14             | 3,5  | .18 | 4,5                   | <b>9060H</b> |  | PR 161-138 HR Tan | .24             | 6,0  |               |     |                 |     |                  |       |
|                                 |     | .18             | 4,5  | .22 | 5,5                   | <b>9062H</b> |  | PR 161-177 HR Tan | .28             | 7,0  | .07           | 1,8 | .32             | 8,0 |                  |       |
|                                 |     | .22             | 5,5  | .26 | 6,5                   | <b>9064H</b> |  | PR 161-217 HR Tan | .32             | 8,0  |               |     |                 |     |                  |       |
|                                 |     | .30             | 7,5  | .34 | 8,5                   | <b>9068H</b> |  | PR 161-295 HR Tan | .39             | 10,0 |               |     |                 |     |                  |       |

Standard color tan (beige).



- Molded from Nylon 4/6 94V-2 - **heat resistant to 266°F (130°C)**.
- Automotive **tan** (beige) color.
- Designed for fast and easy installation with no tools - just fingertip pressure required.
- Simply place rivet into the hole and press down on the head to fasten; legs expand to securely fasten components.
- Part Description Key: PR X-Y where X = Mounting Hole Diameter (inches) and Y = minimum Panel Thickness (inches).
- Standard Pack - 1,000/bag.

Material Nylon 4/6  
Flammability Rating 94V-2  
Temperature Range -4°F (-18°C) to 266°F (130°C)

Quick Specs

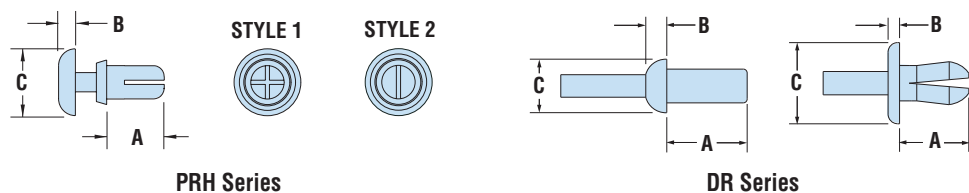


## HEYClip™ Countersunk Type H Rivets

- Flat, **chamfered rivet head** for **easier disassembly** when required.
- Accommodate countersunk hole specification DIN ISO 7721.
- The “H” type rivet is designed with a flat head for fast and easy installation, without any tools.
- Simply place rivet into the hole and press down on the head to fasten.
- Part Description Key: PRH X-Y where X = Mounting Hole Diameter (inches) and Y = minimum Panel Thickness (inches).
- Standard Material: Nylon 6. Nylon 6/6 UL 94V-0 available by special order, consult Heyco.
- Standard Pack - 1,000/bag.

| WILL FIT THESE PANELS |     |                           |      |             |             | PART NO.     |             |              | DESCRIPTION | PART DIMENSIONS |     |               |     |                 |     | EXTRACTION FORCE |       |
|-----------------------|-----|---------------------------|------|-------------|-------------|--------------|-------------|--------------|-------------|-----------------|-----|---------------|-----|-----------------|-----|------------------|-------|
| MOUNTING HOLE DIA.    |     | ASSEMBLED PANEL THICKNESS |      |             |             | Black        | White       | V-0 Black *  |             | A Length        |     | B Head Height |     | C Head Diameter |     | N                | Style |
| in.                   | mm. | Min.                      | Max. | in.         | mm.         |              |             |              |             | in.             | mm. | in.           | mm. | in.             | mm. |                  |       |
| <b>PRH Series</b>     |     |                           |      |             |             |              |             |              |             |                 |     |               |     |                 |     |                  |       |
| .102                  | 2,6 | .22                       | 5,5  | .26         | 6,5         | <b>9118</b>  | <b>9119</b> | <b>9118F</b> | PRH 102-217 | .33             | 8,5 | .03           | 0,7 | .18             | 4,6 | 49               | 1     |
| .122                  | 3,1 | .04                       | 1,0  | .08         | 2,0         | <b>9156</b>  | <b>9157</b> | <b>9156F</b> | PRH 122-039 | .14             | 3,5 | .04           | 1,0 | .25             | 6,4 | 78               | 1     |
|                       |     | .08                       | 2,0  | .12         | 3,0         | <b>9158</b>  | <b>9159</b> | <b>9158F</b> | PRH 122-079 | .18             | 4,5 |               |     |                 |     |                  |       |
|                       |     | .12                       | 3,0  | .16         | 4,0         | <b>9160</b>  | <b>9161</b> | <b>9160F</b> | PRH 122-118 | .22             | 5,5 |               |     |                 |     |                  |       |
|                       |     | .16                       | 4,0  | .19         | 5,0         | <b>9162</b>  | <b>9163</b> | <b>9162F</b> | PRH 122-157 | .26             | 6,5 |               |     |                 |     |                  |       |
|                       |     | .20                       | 5,0  | .24         | 6,0         | <b>9164</b>  | <b>9165</b> | <b>9164F</b> | PRH 122-197 | .31             | 7,5 |               |     |                 |     |                  |       |
|                       |     | .22                       | 5,5  | .26         | 6,5         | <b>9166</b>  | <b>9167</b> | <b>9166F</b> | PRH 122-217 | .32             | 8,0 |               |     |                 |     |                  |       |
|                       |     | .26                       | 6,5  | .30         | 7,5         | <b>9168</b>  | <b>9169</b> | <b>9168F</b> | PRH 122-256 | .35             | 9,0 |               |     |                 |     |                  |       |
| .30                   | 7,5 | .34                       | 8,5  | <b>9170</b> | <b>9171</b> | <b>9170F</b> | PRH 122-295 | .39          | 10,0        |                 |     |               |     |                 |     |                  |       |
| .142                  | 3,6 | .04                       | 1,0  | .08         | 2,0         | <b>9172</b>  | <b>9173</b> | <b>9172F</b> | PRH 142-039 | .14             | 3,5 | .04           | 1,0 | .25             | 6,4 | 118              | 2     |
|                       |     | .08                       | 2,0  | .12         | 3,0         | <b>9174</b>  | <b>9175</b> | <b>9174F</b> | PRH 142-079 | .19             | 4,5 |               |     |                 |     |                  |       |
|                       |     | .12                       | 3,0  | .16         | 4,0         | <b>9176</b>  | <b>9177</b> | <b>9176F</b> | PRH 142-118 | .22             | 5,5 |               |     |                 |     |                  |       |
|                       |     | .14                       | 3,5  | .18         | 4,5         | <b>9178</b>  | <b>9179</b> | <b>9178F</b> | PRH 142-138 | .24             | 6,0 |               |     |                 |     |                  |       |
|                       |     | .18                       | 4,5  | .22         | 5,5         | <b>9180</b>  | <b>9181</b> | <b>9180F</b> | PRH 142-177 | .28             | 7,0 |               |     |                 |     |                  |       |
| .22                   | 5,5 | .26                       | 6,5  | <b>9182</b> | <b>9183</b> | -            | PRH 142-217 | .32          | 8,0         |                 |     |               |     |                 |     |                  |       |

Standard colors black and white.  
\*Black nylon 6/6 UL 94V-0.



- Install by placing rivet into hole and pushing the drive pin into the rivet to expand legs and lock in place.
- No tools required.
- Part Description Key: DR X-Y where X = Mounting Hole Diameter (inches) and Y = minimum Panel Thickness (inches).
- Standard Pack - 1,000/bag.

## HEYClip™ Push (aka Drive) Rivets

| WILL FIT THESE PANELS |     |                           |      |     |      | PART NO.    |              | DESCRIPTION | PART DIMENSIONS |      |               |     |                 |      |
|-----------------------|-----|---------------------------|------|-----|------|-------------|--------------|-------------|-----------------|------|---------------|-----|-----------------|------|
| MOUNTING HOLE DIA.    |     | ASSEMBLED PANEL THICKNESS |      |     |      | Black       | Natural      |             | A Length        |      | B Head Height |     | C Head Diameter |      |
| in.                   | mm. | Min.                      | Max. | in. | mm.  |             |              |             | in.             | mm.  | in.           | mm. | in.             | mm.  |
| <b>DR Series</b>      |     |                           |      |     |      |             |              |             |                 |      |               |     |                 |      |
| .161                  | 4,1 | .10                       | 2,5  | .14 | 3,5  | <b>9141</b> | <b>9142*</b> | DR 161-098  | .20             | 5,0  | .09           | 2,2 | .31             | 8,0  |
| .187                  | 4,8 | .04                       | 1,0  | .38 | 9,5  | <b>9184</b> | <b>9185</b>  | DR 189-039  | .42             | 10,7 | .06           | 1,5 | .28             | 7,1  |
|                       |     | .16                       | 4,0  | .28 | 7,1  | <b>9186</b> | <b>9187</b>  | DR 189-158  | .38             | 9,7  | .06           | 1,5 | .43             | 10,9 |
| .218                  | 5,5 | .09                       | 2,4  | .16 | 4,0  | <b>9188</b> | <b>9189</b>  | DR 217-094  | .45             | 11,4 | .08           | 2,0 | .37             | 9,4  |
| .250                  | 6,4 | .06                       | 1,5  | .25 | 6,4  | <b>9190</b> | <b>9191</b>  | DR 252-059  | .36             | 9,2  | .19           | 4,7 | .44             | 11,1 |
|                       |     | .28                       | 7,1  | .50 | 12,7 | <b>9192</b> | <b>9193</b>  | DR 252-280  | .62             | 15,8 | .08           | 2,0 | .47             | 11,9 |

Standard colors black and natural.  
\*Standard color white.

Quick Specs

|                     |                              |                |
|---------------------|------------------------------|----------------|
| Material            | PRH - Nylon 6                | DR - Nylon 6/6 |
| Flammability Rating | 94V-2                        |                |
| Temperature Range   | -4°F (-18°C) to 185°F (85°C) |                |

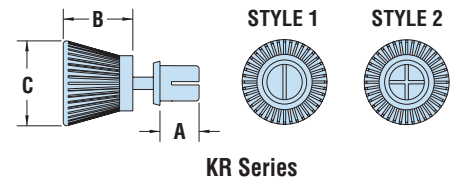


## HEYClip™ Releasable Type T Rivets

| WILL FIT THESE PANELS |                           |     |      |      | PART NO. |             | DESCRIPTION | PART DIMENSIONS |             |               |     |     |     | STYLE |     |
|-----------------------|---------------------------|-----|------|------|----------|-------------|-------------|-----------------|-------------|---------------|-----|-----|-----|-------|-----|
| MOUNTING HOLE DIA.    | ASSEMBLED PANEL THICKNESS |     |      |      | Black    | White       |             | A               |             | B             |     | C   |     |       |     |
|                       | in.                       | mm. | Min. | Max. |          |             |             | Length          | Head Height | Head Diameter | in. | mm. | in. |       | mm. |
| <b>KR Series</b>      |                           |     |      |      |          |             |             |                 |             |               |     |     |     |       |     |
| .122                  | 3,1                       | .04 | 1,0  | .08  | 2,0      | <b>9088</b> | <b>9089</b> | KR 122-039      | .14         | 3,5           |     |     |     |       | 1   |
|                       |                           | .08 | 2,0  | .12  | 3,0      | <b>9090</b> | <b>9091</b> | KR 122-079      | .18         | 4,5           |     |     |     |       |     |
|                       |                           | .12 | 3,0  | .16  | 4,0      | <b>9092</b> | <b>9093</b> | KR 122-118      | .22         | 5,5           |     |     |     |       |     |
|                       |                           | .16 | 4,0  | .20  | 5,0      | <b>9094</b> | <b>9095</b> | KR 122-157      | .26         | 6,5           | .32 | 8,0 | .39 | 10,0  |     |
|                       |                           | .20 | 5,0  | .24  | 6,0      | <b>9194</b> | <b>9195</b> | KR 122-197      | .30         | 7,5           |     |     |     |       |     |
|                       |                           | .22 | 5,5  | .26  | 6,5      | <b>9096</b> | <b>9097</b> | KR 122-217      | .32         | 8,0           |     |     |     |       |     |
| .142                  | 3,6                       | .04 | 1,0  | .08  | 2,0      | <b>9098</b> | <b>9099</b> | KR 142-039      | .14         | 3,5           |     |     |     |       | 2   |
|                       |                           | .08 | 2,0  | .12  | 3,0      | <b>9100</b> | <b>9101</b> | KR 142-079      | .18         | 4,5           |     |     |     |       |     |
|                       |                           | .12 | 3,0  | .16  | 4,0      | <b>9102</b> | <b>9103</b> | KR 142-118      | .22         | 5,5           |     |     |     |       |     |
|                       |                           | .14 | 3,5  | .18  | 4,5      | <b>9104</b> | <b>9105</b> | KR 142-137      | .24         | 6,0           | .32 | 8,0 | .39 | 10,0  |     |
|                       |                           | .18 | 4,5  | .22  | 5,5      | <b>9106</b> | <b>9107</b> | KR 142-177      | .28         | 7,0           |     |     |     |       |     |
|                       |                           | .22 | 5,5  | .26  | 6,5      | <b>9196</b> | <b>9197</b> | KR 142-217      | .32         | 8,0           |     |     |     |       |     |
| .161                  | 4,1                       | .10 | 2,5  | .14  | 3,5      | <b>9108</b> | <b>9109</b> | KR 161-098      | .20         | 5,0           |     |     |     |       | 2   |
|                       |                           | .14 | 3,5  | .18  | 4,5      | <b>9110</b> | <b>9111</b> | KR 161-137      | .24         | 6,0           |     |     |     |       |     |
|                       |                           | .18 | 4,5  | .22  | 5,5      | <b>9112</b> | <b>9113</b> | KR 161-177      | .28         | 7,0           |     |     |     |       |     |
|                       |                           | .22 | 5,5  | .26  | 6,5      | <b>9114</b> | <b>9115</b> | KR 161-217      | .32         | 8,0           | .32 | 8,0 | .47 | 12,0  |     |
|                       |                           | .26 | 6,5  | .30  | 7,5      | <b>9198</b> | <b>9199</b> | KR 161-256      | .35         | 9,0           |     |     |     |       |     |
|                       |                           | .30 | 7,5  | .34  | 8,5      | <b>9116</b> | <b>9117</b> | KR 161-295      | .39         | 10,0          |     |     |     |       |     |

Standard colors black and white.

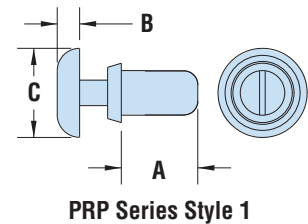
- The “T” style rivet is designed with a **large finger grip**, knob-shaped head for optimal installation and removal by simply pushing or pulling the rivet from the hole.
- Can be used multiple times.
- Part Description Key: KR X-Y where X = Mounting Hole Diameter (inches) and Y = minimum Panel Thickness (inches).
- Standard Material: Nylon 6. Nylon 6/6 UL 94V-0 available by special order, consult Heyco.
- Standard Pack - 1,000/bag.



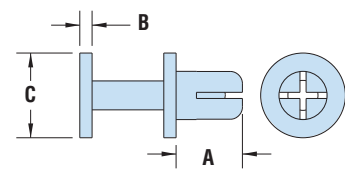
## HEYClip™ Type P Snap Rivets Polysulfone High Temperature Snap Rivets

| WILL FIT THESE PANELS |                           |      |      |      | PART NO. |             | DESCRIPTION | PART DIMENSIONS |             |               |     |     |     | STYLE |
|-----------------------|---------------------------|------|------|------|----------|-------------|-------------|-----------------|-------------|---------------|-----|-----|-----|-------|
| MOUNTING HOLE DIA.    | ASSEMBLED PANEL THICKNESS |      |      |      | Black    |             |             | A               |             | B             |     | C   |     |       |
|                       | in.                       | mm.  | Min. | Max. |          |             |             | Length          | Head Height | Head Diameter | in. | mm. | in. |       |
| <b>PRP Series</b>     |                           |      |      |      |          |             |             |                 |             |               |     |     |     |       |
| .122                  | 3,1                       | .078 | 2,0  | .118 | 3,0      | <b>9349</b> | PRP 122-079 | .18             | 4,5         | .06           | 1,6 | .25 | 6,4 | 1     |
|                       |                           | .118 | 3,0  | .157 | 4,0      | <b>9350</b> | PRP 122-118 | .22             | 5,6         |               |     |     |     |       |
| .161                  | 4,1                       | .157 | 4,0  | .197 | 5,0      | <b>9351</b> | PRP 122-157 | .26             | 6,5         | .04           | 1,0 | .28 | 7,0 | 2     |

Standard color black.



PRP Series Style 1



PRP Series Style 2

|                     | KR                           | PRP                         |
|---------------------|------------------------------|-----------------------------|
| Material            | Nylon 6                      | Polysulfone (PSU)           |
| Flammability Rating | 94V-2                        | 94-HB                       |
| Temperature Range   | -4°F (-18°C) to 185°F (85°C) | 32°F (0°C) to 302°F (150°C) |

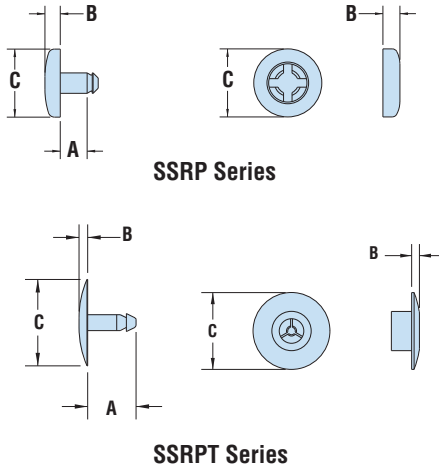
Quick Specs

“Stay Connected with” HEYware



## HEYClip™ Shorty Snap Rivets

### Two Piece Snap Together Rivets

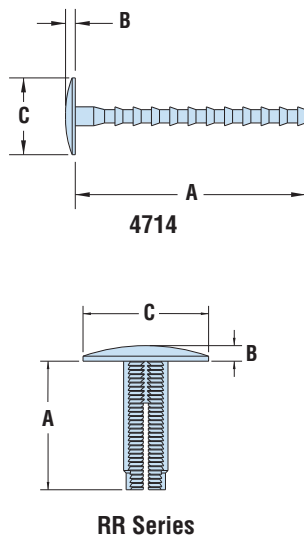


| WILL FIT THESE PANELS   |     |                           |            | PART NO.    | DESCRIPTION | PART DIMENSIONS |               |     |                 |      |      | STYLE |
|---|-----|---------------------------|------------|-------------|-------------|-----------------|---------------|-----|-----------------|------|------|-------|
| MOUNTING HOLE DIA.  |     | ASSEMBLED PANEL THICKNESS |            |             |             | A Length        | B Head Height |     | C Head Diameter |      |      |       |
| in.   | mm. | in.                       | mm.        | Natural     |             |                 | in.           | mm. | in.             | mm.  | in.  | mm.   |
| <b>SSRP Series - Pin fits a .125" (3,2 mm) diameter hole</b>  |     |                           |            |             |             |                 |               |     |                 |      |      |       |
| .125  | 3,2 | .030                      | 0,8        | <b>4064</b> | SSRP-030    | .06             | 1,6           | .09 | 2,3             | .40  | 10,2 | 1     |
|   |     | .062                      | 1,6        | <b>4065</b> | SSRP-062    | .10             | 2,4           |     |                 |      |      |       |
|   |     | .100                      | 2,5        | <b>4069</b> | SSRP-100    | .13             | 3,4           |     |                 |      |      |       |
|   |     | .125                      | 3,2        | <b>4071</b> | SSRP-125    | .16             | 4,0           |     |                 |      |      |       |
|   |     | .187                      | 4,8        | <b>4073</b> | SSRP-187    | .22             | 5,6           |     |                 |      |      |       |
|   |     | .250                      | 6,4        | <b>4075</b> | SSRP-250    | .28             | 7,2           |     |                 |      |      |       |
| FEMALE CAP for the above parts                                |     |                           |            | <b>4077</b> | SSRC        | n/a             | .10           | 2,5 | .40             | 10,2 | 2    |       |
| <b>SSRPT Series - Cap fits a .320" (8,1 mm) diameter hole</b> |     |                           |            |             |             |                 |               |     |                 |      |      |       |
| .320  | 8,1 | .170 - .190               | 4,3 - 4,8  | <b>4715</b> | SSRPT-190   | .21             | 5,3           | .06 | 1,6             | .40  | 10,2 | 3     |
|   |     | .220 - .240               | 5,6 - 6,1  | <b>4716</b> | SSRPT-220   | .26             | 6,6           |     |                 |      |      |       |
|   |     | .320 - .340               | 8,1 - 8,6  | <b>4717</b> | SSRPT-340   | .35             | 8,9           |     |                 |      |      |       |
|   |     | .320 - .600               | 8,1 - 15,2 | <b>4718</b> | SSRPT-600   | .63             | 16,0          |     |                 |      |      |       |
|   |     | ADJUSTABLE                |            | <b>4714</b> | SSRPT-ADJ   | 1.50            | 38,1          |     |                 |      |      |       |
| FEMALE CAP for the above parts                                |     |                           |            | <b>4719</b> | SSRCT       | n/a             | .06           | 1,6 | .63             | 15,9 | 5    |       |

Standard color natural.



## HEYClip™ Ratchet Rivets



| WILL FIT THESE PANELS |     |                           |      | PART NO. | DESCRIPTION | PART DIMENSIONS |               |     |                 |     |     |     |      |
|-----------------------|-----|---------------------------|------|----------|-------------|-----------------|---------------|-----|-----------------|-----|-----|-----|------|
| MOUNTING HOLE DIA.    |     | ASSEMBLED PANEL THICKNESS |      |          |             | A Length        | B Head Height |     | C Head Diameter |     |     |     |      |
| in.                   | mm. | Min.                      | Max. | Natural  |             |                 | in.           | mm. | in.             | mm. | in. | mm. |      |
| <b>RR Series</b>      |     |                           |      |          |             |                 |               |     |                 |     |     |     |      |
| .281                  | 7,1 | .235                      | 6,0  | .297     | 7,5         | <b>12480</b>    | RR 0297-41    | .23 | 5,7             | .06 | 1,6 | .41 | 10,3 |
|                       |     | .345                      | 8,8  | .500     | 12,7        | <b>12481</b>    | RR 0500-41    | .34 | 8,7             |     |     |     |      |
|                       |     | .500                      | 12,7 | .813     | 20,7        | <b>12482</b>    | RR 0813-41    | .49 | 12,4            |     |     |     |      |
|                       |     | .780                      | 19,8 | 1.375    | 34,9        | <b>12483</b>    | RR 1375-41    | .77 | 19,5            |     |     |     |      |
|                       |     | .235                      | 6,0  | .298     | 7,6         | <b>12484</b>    | RR 0298-75    | .23 | 5,7             | .09 | 2,4 | .75 | 19,1 |
|                       |     | .345                      | 8,8  | .500     | 12,7        | <b>12485</b>    | RR 0500-75    | .34 | 8,7             |     |     |     |      |
|                       |     | .500                      | 12,7 | .812     | 20,6        | <b>12486</b>    | RR 0812-75    | .49 | 12,4            |     |     |     |      |
|                       |     | .780                      | 19,8 | 1.375    | 34,9        | <b>12487</b>    | RR 1375-75    | .77 | 19,5            |     |     |     |      |

Standard color natural.

Quick Specs

Material Nylon 6/6  
 Flammability Rating 94 V-2  
 Temperature Range 32°F (0°C) to 185°F (85°C)



“Stay Connected with” HEYware

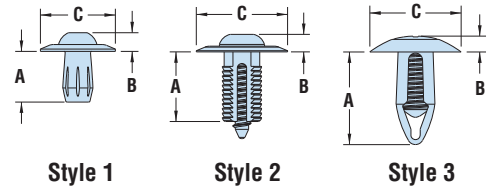


## HEYClip™ Unscrewing Snap Rivets

| WILL FIT THESE PANELS |     |                           |          |          |          | PART NO.    | DESCRIPTION  | PART DIMENSIONS |      |               |     |                 |      | STYLE |
|-----------------------|-----|---------------------------|----------|----------|----------|-------------|--------------|-----------------|------|---------------|-----|-----------------|------|-------|
| MOUNTING HOLE DIA.    |     | ASSEMBLED PANEL THICKNESS |          |          |          |             |              | A Length        |      | B Head Height |     | C Head Diameter |      |       |
| in.                   | mm. | Min. in.                  | Max. in. | Min. mm. | Max. mm. |             |              | in.             | mm.  | in.           | mm. | in.             | mm.  |       |
| <b>HUSR Series</b>    |     |                           |          |          |          |             |              |                 |      |               |     |                 |      |       |
| .197                  | 5,0 | .059                      | 1,5      | .236     | 6,0      | <b>4330</b> | HUSR 197-158 | .43             | 11,0 | .15           | 3,9 | .47             | 12,0 | 1     |
| .236                  | 6,0 | .059                      | 1,5      | .236     | 6,0      | <b>4331</b> | HUSR 236-059 | .43             | 11,0 | .15           | 3,9 | .63             | 16,0 | 1     |
| .315                  | 8,0 | .118                      | 3,0      | .394     | 10,0     | <b>4332</b> | HUSR 315-118 | .55             | 14,0 | .16           | 4,0 | .79             | 20,0 | 2     |
|                       |     | .276                      | 7,0      | .315     | 8,0      | <b>4333</b> | HUSR 315-276 | .80             | 20,3 | .14           | 3,6 | .79             | 20,0 | 3     |

Standard color black.

- Phillips head screw driver required for removal.

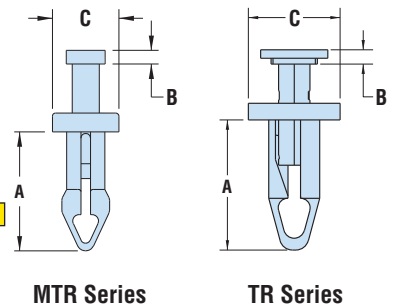


## HEYClip™ Tough Rivets

| WILL FIT THESE PANELS       |             |                           |             |             |             |                      |     | PART NO.     | DESCRIPTION | PART DIMENSIONS |      |                 |     |     |      |
|-----------------------------|-------------|---------------------------|-------------|-------------|-------------|----------------------|-----|--------------|-------------|-----------------|------|-----------------|-----|-----|------|
| MOUNTING HOLE DIAMETER      |             | ASSEMBLED PANEL THICKNESS |             |             |             | A Length Below Panel |     |              |             | B Head Height   |      | C Head Diameter |     |     |      |
| Minimum in.                 | Maximum mm. | Minimum in.               | Maximum in. | Minimum mm. | Maximum mm. | in.                  | mm. |              |             | in.             | mm.  | in.             | mm. |     |      |
| <b>Mini - MTR Series</b>    |             |                           |             |             |             |                      |     |              |             |                 |      |                 |     |     |      |
| .122                        | 3,1         | .128                      | 3,3         | .155        | 3,9         | .180                 | 4,6 | <b>12475</b> | MTR 180-125 | .37             | 9,4  | .05             | 1,3 | .22 | 5,5  |
| .144                        | 3,7         | .154                      | 3,9         | .265        | 6,7         | .290                 | 7,4 | <b>12477</b> | MTR 290-150 | .47             | 11,9 | .05             | 1,3 | .30 | 7,6  |
| <b>Standard - TR Series</b> |             |                           |             |             |             |                      |     |              |             |                 |      |                 |     |     |      |
| .193                        | 4,9         | .205                      | 5,2         | .059        | 1,5         | .181                 | 4,6 | <b>12466</b> | TR 181-199  | .45             | 11,3 | .08             | 2,1 | .28 | 7,2  |
| .250                        | 6,4         | .276                      | 7,0         | .098        | 2,5         | .315                 | 8,0 | <b>12468</b> | TR 315-263  | .90             | 22,8 | .11             | 2,8 | .59 | 15,0 |
| .315                        | 8,0         | .325                      | 8,3         | .118        | 3,0         | .315                 | 8,0 | <b>12469</b> | TR 315-320  | .83             | 21,1 | .09             | 2,3 | .59 | 15,0 |

Standard color black.

ALL NEW!



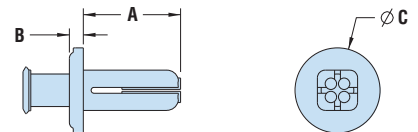
## Heyco® Removable Rivets

| WILL FIT THESE PANELS  |     |                           |     | PART NO.      | DESCRIPTION | PART DIMENSION       |      |               |     |                 |      |
|------------------------|-----|---------------------------|-----|---------------|-------------|----------------------|------|---------------|-----|-----------------|------|
| Mounting Hole Diameter |     | Assembled Panel Thickness |     |               |             | A Length Below Panel |      | B Head Height |     | C Head Diameter |      |
| in.                    | mm. | in.                       | mm. |               |             | in.                  | mm.  | in.           | mm. | in.             | mm.  |
| .188                   | 4,8 | .062                      | 1,6 | <b>12220</b>  | HRR 062-188 | .50                  | 12,7 | .07           | 1,8 | .38             | 9,5  |
|                        |     | .125                      | 3,2 | <b>12221</b>  | HRR 125-188 |                      |      |               |     |                 |      |
| .250                   | 6,4 | .062                      | 1,6 | <b>12222*</b> | HRR 062-250 | .50                  | 12,7 | .07           | 1,8 | .44             | 11,1 |
|                        |     | .125                      | 3,2 | <b>12223</b>  | HRR 125-250 |                      |      |               |     |                 |      |
|                        |     | .187                      | 4,7 | <b>12224</b>  | HRR 187-250 |                      |      |               |     |                 |      |

Standard color natural.

\*Will also fit .210" x .218" square hole (for Darling Shelves).

- Two-piece rivet can be removed by retracting the pin then the body.
- Slot in line with pin for pin removal with small screw driver, fingernail or other sharp edge underneath the head of the pin.



|                     | HUSR & HRR                 | MTR                         | TR                          |
|---------------------|----------------------------|-----------------------------|-----------------------------|
| Material            | Nylon 6/6                  | Heat stabilized Nylon 6     | Nylon 6/6                   |
| Flammability Rating | 94V-2                      | 94 V-2                      | 94HB                        |
| Temperature Range   | 32°F (0°C) to 185°F (85°C) | 32°F (0°C) to 230°F (110°C) | 32°F (0°C) to 230°F (110°C) |

“Stay Connected with” HEYware

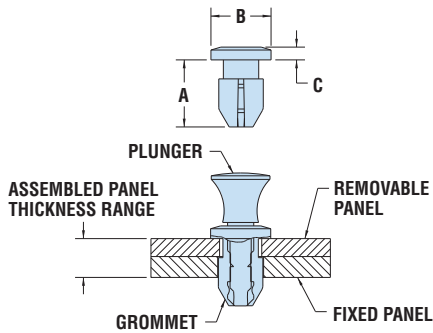


ALL NEW PRODUCTS!

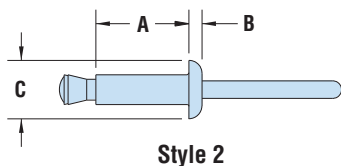
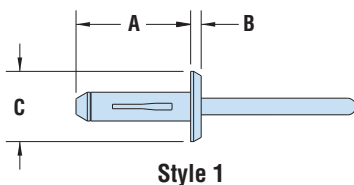
STANDARD PACK 1,000/BAG



- Designed for fast and easy installation and removal - simply push to fasten and pull to release.
- Ideal for frequent maintenance work.
- Typical applications include metal enclosures, telecom equipment, appliances and electrical equipment.



- One-piece, all plastic expansion rivet.
- Designed to securely fasten a wide variety of materials in a range of applications.
- Inserts quickly from either side of assembly.
- Use with standard rivet setting tool - pull the pin through the body and panels are drawn together.
- Head breaks off even with pin and leaves an attractive, finished appearance.
- Effective for soft materials such as rubber, padded fabrics, etc.



## Heyco® Snap Latch Rivets

### Grommet

| FIXED PANEL HOLE DIAMETER |     | REMOVABLE PANEL THICKNESS |     | PART NO.     |              | DESCRIPTION | MATING PLUNGER |       | PART DIMENSIONS |      |                 |     |               |     |
|---------------------------|-----|---------------------------|-----|--------------|--------------|-------------|----------------|-------|-----------------|------|-----------------|-----|---------------|-----|
| in.                       | mm. | in.                       | mm. | Black        | White        |             | Black          | White | A Body Length   |      | B Head Diameter |     | C Head Height |     |
|                           |     |                           |     |              |              |             |                |       | in.             | mm.  | in.             | mm. | in.           | mm. |
| .253                      | 6,4 | .043                      | 1,1 | <b>12283</b> | <b>12284</b> | HSLG-1M     | 12261          | 12262 | .31             | 8,0  | .33             | 8,5 | .07           | 1,8 |
|                           |     | .063                      | 1,6 | <b>12285</b> | <b>12286</b> | HSLG-2M     | 12263          | 12264 | .33             | 8,5  |                 |     |               |     |
|                           |     | .098                      | 2,5 | <b>12287</b> | <b>12288</b> | HSLG-3M     | 12265          | 12266 | .37             | 9,5  |                 |     |               |     |
|                           |     | .161                      | 4,1 | <b>12289</b> | <b>12290</b> | HSLG-4M     | 12267          | 12268 | .43             | 11,0 |                 |     |               |     |

Standard colors black and white.

### Plunger

| REMOVABLE PANEL HOLE DIAMETER | ASSEMBLED PANEL THICKNESS RANGE |      |         |      | PART NO. |              | DESCRIPTION  | MATING GROMMET |       |       |
|-------------------------------|---------------------------------|------|---------|------|----------|--------------|--------------|----------------|-------|-------|
|                               | Minimum                         |      | Maximum |      | Black    | White        |              | Black          | White |       |
|                               | in.                             | mm.  | in.     | mm.  |          |              |              |                |       |       |
| .237                          | 6,0                             | .059 | 1,5     | .146 | 3,7      | <b>12261</b> | <b>12262</b> | HSLPB-1M       | 12283 | 12284 |
|                               |                                 | .079 | 2,0     | .165 | 4,2      | <b>12263</b> | <b>12264</b> | HSLPB-2M       | 12285 | 12286 |
|                               |                                 | .118 | 3,0     | .205 | 5,2      | <b>12265</b> | <b>12266</b> | HSLPB-3M       | 12287 | 12288 |
|                               |                                 | .181 | 4,6     | .272 | 6,9      | <b>12267</b> | <b>12268</b> | HSLPB-4M       | 12289 | 12290 |

Standard colors black and white.

## Heyco® Expansion Rivets

| Mounting Hole Dia. | WILL FIT THESE PANELS Assembled Panel Thickness |      |         |      | PART NO. | DESCRIPTION  | PART DIMENSIONS |          |      |               |     |                 |      |
|--------------------|---|------|---------|------|----------|--------------|-----------------|----------|------|---------------|-----|-----------------|------|
|                    | Minimum   |      | Maximum |      |          |              | Black           | A Length |      | B Head Height |     | C Head Diameter |      |
|                    | in.   | mm.  | in.     | mm.  |          |              |                 | in.      | mm.  | in.           | mm. | in.             | mm.  |
| <b>EXR Style 1</b> |   |      |         |      |          |              |                 |          |      |               |     |                 |      |
| .157               | 4,0   | .059 | 1,5     | .177 | 4,5      | <b>12230</b> | EXR 177-157     | .73      | 18,5 | .10           | 2,5 | .31             | 8,0  |
|                    |   | .118 | 3,0     | .157 | 4,0      | <b>12231</b> | EXR-157-197     | .65      | 16,5 | .07           | 1,8 | .35             | 8,9  |
| .197               | 5,0   | .118 | 3,0     | .236 | 6,0      | <b>12232</b> | EXR 236-197     | .79      | 20,0 | .07           | 1,8 | .47             | 12,0 |
|                    |   | .236 | 6,0     | .394 | 10,0     | <b>12233</b> | EXR 394-197     | .98      | 25,0 |               |     |                 |      |
| .236               | 6,0   | .157 | 4,0     | .335 | 8,5      | <b>12235</b> | EXR 335-236     | 1.10     | 28,0 | .10           | 2,5 | .51             | 13,0 |
| .240               | 6,1   | .157 | 4,0     | .311 | 7,9      | <b>12237</b> | EXR 311-240     | 1.14     | 29,0 | .10           | 2,5 | .67             | 16,9 |
| .248               | 6,3   | .295 | 7,5     | .453 | 11,5     | <b>12238</b> | EXR 453-248     | 1.26     | 31,9 |               |     |                 |      |
| <b>EXR Style 2</b> |   |      |         |      |          |              |                 |          |      |               |     |                 |      |
| .130               | 3,3   | .039 | 1,0     | .138 | 3,5      | <b>12650</b> | EXR 138-130     | .25      | 6,4  | .06           | 1,4 | .25             | 6,4  |
|                    |   | .138 | 3,5     | .256 | 6,5      | <b>12651</b> | EXR 256-130     | .38      | 9,6  |               |     |                 |      |
|                    |   | .256 | 6,5     | .374 | 9,5      | <b>12652</b> | EXR 374-130     | .50      | 12,7 |               |     |                 |      |
| .161               | 4,1   | .039 | 1,0     | .138 | 3,5      | <b>12653</b> | EXR 138-161     | .25      | 6,4  | .07           | 1,8 | .32             | 8,0  |
|                    |   | .138 | 3,5     | .236 | 6,0      | <b>12654</b> | EXR 236-161     | .38      | 9,6  |               |     |                 |      |
|                    |   | .236 | 6,0     | .354 | 9,0      | <b>12655</b> | EXR 354-161     | .50      | 12,7 |               |     |                 |      |
| .193               | 4,9   | .059 | 1,5     | .177 | 4,5      | <b>12656</b> | EXR 177-193     | .31      | 8,0  | .08           | 2,0 | .38             | 9,6  |
|                    |   | .177 | 4,5     | .295 | 7,5      | <b>12657</b> | EXR 295-193     | .44      | 11,2 |               |     |                 |      |
|                    |   | .295 | 7,5     | .413 | 10,5     | <b>12658</b> | EXR 413-193     | .57      | 14,4 |               |     |                 |      |
| .224               | 5,7   | .079 | 2,0     | .197 | 5,0      | <b>12659</b> | EXR 197-224     | .38      | 9,6  | .09           | 2,2 | .47             | 12,0 |
|                    |   | .197 | 5,0     | .315 | 8,0      | <b>12660</b> | EXR 315-224     | .50      | 12,7 |               |     |                 |      |
|                    |   | .315 | 8,0     | .453 | 11,5     | <b>12661</b> | EXR 453-224     | .63      | 15,9 |               |     |                 |      |

Standard color black.

|                     |   |                         |
|---------------------|---|-------------------------|
| Material            | HSLG, HSLPB & EXR Body<br>Nylon 6/6     | EXR Pin<br>Acetal (POM) |
| Flammability Rating | 94V-2                                   | 94-HB                   |
| Temperature Range   | 32°F (0°C) to 185°F (85°C) (All Series) |                         |



“Stay Connected with” HEYware

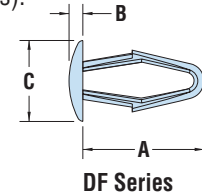


## HEYClip™ Drive Fasteners

| WILL FIT THESE PANELS |     |                           |      |     |     | PART NO.    |             | DESCRIPTION  | PART DIMENSIONS |      |               |     |                 |      |
|-----------------------|-----|---------------------------|------|-----|-----|-------------|-------------|--------------|-----------------|------|---------------|-----|-----------------|------|
| MOUNTING HOLE DIA.    |     | ASSEMBLED PANEL THICKNESS |      |     |     | Black       | Natural     |              | A Length        |      | B Head Height |     | C Head Diameter |      |
| in.                   | mm. | Min.                      | Max. | in. | mm. |             |             |              | in.             | mm.  | in.           | mm. | in.             | mm.  |
| .125                  | 3,2 | .04                       | 1,0  | .18 | 4,5 | <b>9201</b> | <b>9202</b> | DF 125-039   | .51             | 13,0 | .06           | 1,5 | .31             | 8,0  |
| .154                  | 3,9 | .04                       | 1,0  | .20 | 5,0 | <b>9203</b> | <b>9204</b> | DF 154-039   | .55             | 14,0 | .06           | 1,6 | .35             | 9,0  |
| .185                  | 4,7 | .04                       | 1,0  | .22 | 5,5 | <b>9205</b> | <b>9206</b> | DF 185-039   | .59             | 15,0 | .07           | 1,7 | .39             | 10,0 |
|                       |     |                           |      |     |     | <b>9126</b> | <b>9127</b> | DF 185-039-1 | .59             | 15,0 | .11           | 2,9 | .43             | 11,0 |
| .250                  | 6,4 | .06                       | 1,5  | .26 | 6,5 | <b>9128</b> | <b>9129</b> | DF 250-059   | .67             | 17,0 | .08           | 2,0 | .47             | 12,0 |
| .307                  | 7,8 | .06                       | 1,5  | .28 | 7,0 | <b>9207</b> | <b>9208</b> | DF 307-059   | .75             | 19,0 | .09           | 2,2 | .55             | 14,0 |
| .217                  | 5,5 | .24                       | 6,0  | .35 | 9,0 | <b>9209</b> | <b>9210</b> | DF 217-236   | .71             | 18,0 | .08           | 2,0 | .47             | 12,0 |

Standard colors black and natural.

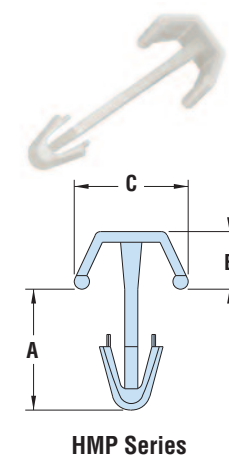
- Heyco Drive Fasteners help secure and fasten components and/or panels to a wide variety of materials such as wood, metal, particle board, plastic and rubber.
- Hollow body design increases flexibility, for easy installation.
- Part Description Key: DF XXX-YYY where XXX = Mounting Hole Diameter (inches) and YYY = minimum Panel Thickness (inches).



## HEYClip™ Mounting Buttons

| WILL FIT THESE PANELS |     |                           |      |      |      | PART NO.    |  | DESCRIPTION | PART DIMENSIONS |      |               |     |                 |     |
|-----------------------|-----|---------------------------|------|------|------|-------------|--|-------------|-----------------|------|---------------|-----|-----------------|-----|
| MOUNTING HOLE DIA.    |     | ASSEMBLED PANEL THICKNESS |      |      |      | Natural     |  |             | A Length        |      | B Head Height |     | C Head Diameter |     |
| in.                   | mm. | Min.                      | Max. | in.  | mm.  |             |  |             | in.             | mm.  | in.           | mm. | in.             | mm. |
| .156                  | 4,0 | .031                      | 0,8  | .100 | 2,4  | <b>4251</b> |  | HMP 156-031 | .24             | 6,1  |               |     |                 |     |
|                       |     | .094                      | 2,4  | .157 | 4,0  | <b>4252</b> |  | HMP 156-094 | .30             | 7,7  |               |     |                 |     |
|                       |     | .189                      | 4,8  | .220 | 5,6  | <b>4253</b> |  | HMP 156-189 | .40             | 10,1 |               |     |                 |     |
|                       |     | .220                      | 5,6  | .312 | 7,1  | <b>4254</b> |  | HMP 156-220 | .43             | 10,9 |               |     |                 |     |
|                       |     | .312                      | 7,9  | .375 | 9,5  | <b>4255</b> |  | HMP 156-312 | .52             | 13,2 | .19           | 4,8 | .38             | 9,5 |
|                       |     | .375                      | 9,5  | .437 | 11,1 | <b>4256</b> |  | HMP 156-375 | .58             | 14,8 |               |     |                 |     |
|                       |     | .437                      | 11,1 | .500 | 12,7 | <b>4257</b> |  | HMP 156-437 | .65             | 16,4 |               |     |                 |     |
|                       |     | .500                      | 12,7 | .563 | 14,3 | <b>4258</b> |  | HMP 156-500 | .71             | 18,0 |               |     |                 |     |
|                       |     | .563                      | 14,3 | .625 | 15,9 | <b>4259</b> |  | HMP 156-563 | .77             | 19,6 |               |     |                 |     |

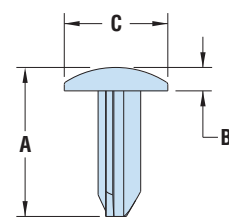
Standard color natural.



## HEYClip™ Fastener Plug

| WILL FIT THESE PANELS |     |                                |     | PART NO.    |  | DESCRIPTION | PART DIMENSIONS |      |               |     |                 |     |
|-----------------------|-----|--------------------------------|-----|-------------|--|-------------|-----------------|------|---------------|-----|-----------------|-----|
| MOUNTING HOLE DIA.    |     | MAX. ASSEMBLED PANEL THICKNESS |     | Black       |  |             | A Length        |      | B Head Height |     | C Head Diameter |     |
| in.                   | mm. | in.                            | mm. |             |  |             | in.             | mm.  | in.           | mm. | in.             | mm. |
| .150                  | 3,8 | .311                           | 7,9 | <b>9001</b> |  | FP 150-311  | .45             | 11,5 | .07           | 1,8 | .31             | 8,0 |

Standard color black. For other colors consult Heyco.



|                     | DF and FP                     | HMP                        |
|---------------------|-------------------------------|----------------------------|
| Material            | Acetal (POM)                  | Nylon 6/6                  |
| Flammability Rating | 94-HB                         | 94V-2                      |
| Temperature Range   | -4°F (-18°C) to 220°F (104°C) | 32°F (0°C) to 185°F (85°C) |

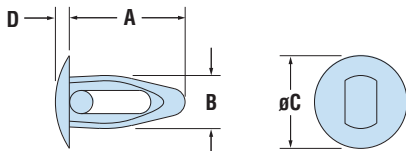
Quick Specs



## HEYClip™ Nylon Arrow Clips

### Maximum Assembled Panel Sequence

- **Hollow body design** allows the clip to compress through the mounting hole, then expand back to original shape to lock assembled components securely (PN 0306 does not have a hollow body).
- May be disassembled and reused.
- Offer a low cost way to assemble metal, plastic, composite, wood, and other thin gauge materials.
- Snap into mounting holes with fingertip pressure—no tools required.
- Vibration, abrasion, and corrosion resistant.



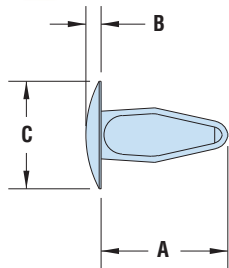
AC/ACT Series

| ASSEMBLED PANEL THICKNESS RANGE   |      |         |      | MOUNTING HOLE DIAMETER RANGE |     |         |     | PART NO.    |              | DESCRIPTION | PART DIMENSIONS |           |             |     |     |      |     |     |
|---|------|---------|------|------------------------------|-----|---------|-----|-------------|--------------|-------------|-----------------|-----------|-------------|-----|-----|------|-----|-----|
| Maximum   |      | Minimum |      | Maximum                      |     | Minimum |     | Natural     | Black        |             | A               |           | B           |     | C   |      | D   |     |
| in.   | mm.  | in.     | mm.  | in.                          | mm. | in.     | mm. |             |              | Length      | Clip Dia.       | Head Dia. | Head Height | in. | mm. | in.  | mm. |     |
| <b>AC Series</b> For combined Panel Thickness $\bar{\leq}$ .250" (6,4 mm) |      |         |      |                              |     |         |     |             |              |             |                 |           |             |     |     |      |     |     |
| .10   | 2,5  | .04     | 1,0  | .190                         | 4,8 | .180    | 4,6 | <b>0325</b> | <b>0325B</b> | AC 1996     | .45             | 11,4      | .22         | 5,5 | .36 | 9,1  |     |     |
|   |      |         |      | .122                         | 3,1 | .118    | 3,0 | <b>0315</b> | <b>0315B</b> | AC 15       | .39             | 9,9       | .15         | 3,8 |     |      | .06 | 1,5 |
|   |      |         |      | .135                         | 3,4 | .130    | 3,3 | <b>0302</b> | <b>0302B</b> | AC 2        | .38             | 9,7       | .16         | 4,1 | .28 | 7,1  |     |     |
|   |      |         |      | .165                         | 4,2 | .160    | 4,1 | <b>0318</b> | <b>0318B</b> | AC 18 *     | .40             | 10,2      | .19         | 4,7 | .28 | 7,1  | .08 | 2,0 |
| .13   | 3,2  | .06     | 1,6  | .192                         | 4,9 | .182    | 4,6 | <b>0301</b> | <b>0301B</b> | AC 1        | .42             | 10,5      | .23         | 5,7 | .36 | 9,1  |     |     |
|   |      |         |      | .212                         | 5,4 | .192    | 4,9 | <b>0328</b> | <b>0328B</b> | AC 28       | .45             | 11,4      | .24         | 6,0 | .38 | 9,5  |     |     |
|   |      |         |      | .223                         | 5,7 | .213    | 5,4 | <b>0307</b> | <b>0307B</b> | AC 7        | .45             | 11,4      | .22         | 5,6 | .37 | 9,4  |     |     |
| .14   | 3,6  | .13     | 3,2  | .132                         | 3,4 | .130    | 3,3 | <b>0313</b> | <b>0313B</b> | AC 13       | .32             | 8,1       | .16         | 4,1 | .28 | 7,1  | .06 | 1,5 |
| .15   | 3,7  | .06     | 1,6  | .161                         | 4,1 | .151    | 3,8 | <b>0304</b> | <b>0304B</b> | AC 4        | .40             | 10,2      | .18         | 4,6 |     |      |     |     |
| .16   | 4,1  | .06     | 1,6  | .223                         | 5,7 | .213    | 5,4 | <b>0305</b> | <b>0305B</b> | AC 5        | .52             | 13,2      | .25         | 6,3 |     |      |     |     |
|   |      |         |      | .17                          | 4,2 | .192    | 4,9 | <b>0311</b> | <b>0311B</b> | AC 11       | .52             | 13,2      | .21         | 5,2 | .37 | 9,4  |     |     |
| .19   | 4,7  | .06     | 1,6  | .223                         | 5,7 | .213    | 5,4 | <b>0326</b> | <b>0326B</b> | AC 1668     | .49             | 12,5      | .25         | 6,3 | .63 | 15,9 | .10 | 2,5 |
|   |      |         |      | .13                          | 3,2 | .260    | 6,6 | <b>0309</b> | <b>0309B</b> | AC 9        | .58             | 14,6      | .29         | 7,4 | .48 | 12,3 | .07 | 1,8 |
| .25   | 6,4  | .13     | 3,2  | .260                         | 6,6 | .250    | 6,4 | <b>0321</b> | <b>0321B</b> | AC 21**     | .63             | 16,0      | .28         | 7,1 | .50 | 12,7 | .09 | 2,2 |
| <b>ACT Series</b> For combined Panel Thickness > .250" (6,4 mm)           |      |         |      |                              |     |         |     |             |              |             |                 |           |             |     |     |      |     |     |
| .30   | 7,6  | .29     | 7,4  | .150                         | 3,8 | .145    | 3,7 | <b>0314</b> | <b>0314B</b> | AC 14       | .53             | 13,5      | .20         | 5,0 | .27 | 6,9  | .07 | 1,7 |
| .33   | 8,4  | .31     | 7,9  | .192                         | 4,9 | .182    | 4,6 | <b>0306</b> | <b>0306B</b> | AC 6 **     | .55             | 14,0      | .23         | 5,7 | .38 | 9,7  | .06 | 1,5 |
| .34   | 8,6  | .06     | 1,6  | .335                         | 8,5 | .320    | 8,1 | <b>0317</b> | <b>0317B</b> | AC 17       | .90             | 22,9      | .38         | 9,5 | .68 | 17,3 |     |     |
| .38   | 9,7  | .36     | 9,1  | .260                         | 6,6 | .250    | 6,4 | <b>0316</b> | <b>0316B</b> | AC 16       | .81             | 20,6      | .28         | 7,0 | .61 | 15,5 | .07 | 1,7 |
| .75   | 19,1 | .50     | 12,7 | .260                         | 6,6 | .250    | 6,4 | <b>0324</b> | <b>0324B</b> | AC 24**     | 1.14            | 28,8      | .29         | 7,3 |     |      |     |     |

Standard color natural. Consult Heyco for black and other colors.

\*AC 18 minimum panel thickness is .03" (0,8 mm), head height is .08" (2,0 mm)

\*\*Webbed, not hollow body.



HMB Series

## HEYClip™ Shorty Mounting Buttons



| ASSEMBLED PANEL THICKNESS RANGE |     |         |     | MOUNTING HOLE DIAMETER RANGE |     |         |     | PART NO.    |              | DESCRIPTION | PART DIMENSIONS |           |             |     |     |      |     |     |
|---------------------------------|-----|---------|-----|------------------------------|-----|---------|-----|-------------|--------------|-------------|-----------------|-----------|-------------|-----|-----|------|-----|-----|
| Maximum                         |     | Minimum |     | Maximum                      |     | Minimum |     | Natural     | Black        |             | A               |           | B           |     | C   |      | D   |     |
| in.                             | mm. | in.     | mm. | in.                          | mm. | in.     | mm. |             |              | Length      | Clip Dia.       | Head Dia. | Head Height | in. | mm. | in.  | mm. |     |
| <b>HMB Series</b>               |     |         |     |                              |     |         |     |             |              |             |                 |           |             |     |     |      |     |     |
| .10                             | 2,5 | .08     | 2,0 | .127                         | 3,2 | .122    | 3,1 | <b>4199</b> | <b>4199B</b> | HMB 125-06  | .33             | 8,4       | .09         | 2,2 | .28 | 7,1  | .05 | 1,2 |
| .16                             | 4,0 | .11     | 2,9 | .141                         | 3,6 | .131    | 3,3 | <b>4200</b> | <b>4200B</b> | HMB 136-06  | .44             | 11,1      | .13         | 3,2 | .41 | 10,3 | .07 | 1,7 |
| .16                             | 4,0 | .10     | 2,5 | .192                         | 4,9 | .181    | 4,6 | <b>4201</b> | <b>4201B</b> | HMB 187-06  | .43             | 10,9      | .16         | 4,0 | .50 | 12,7 | .09 | 2,2 |

Standard color natural and black.

Quick Specs

|                     |                            |
|---------------------|----------------------------|
| Material            | Nylon 6/6                  |
| Flammability Rating | 94V-2                      |
| Temperature Range   | 32°F (0°C) to 185°F (85°C) |



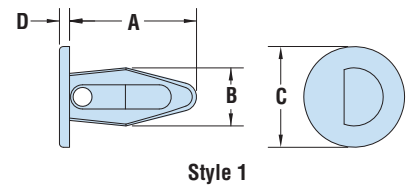
## HEYClip™ Nylon Kayak Clips

Maximum Assembled Panel Sequence

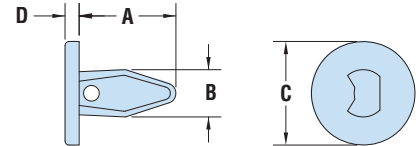
| ASSEMBLED PANEL THICKNESS RANGE |     |         |     | MOUNTING HOLE DIAMETER RANGE |     |         |     | PART NO.    | DESCRIPTION | PART DIMENSIONS |      |     |     |     |      |     |     | Head Type | Style |
|---------------------------------|-----|---------|-----|------------------------------|-----|---------|-----|-------------|-------------|-----------------|------|-----|-----|-----|------|-----|-----|-----------|-------|
| Maximum                         |     | Minimum |     | Maximum                      |     | Minimum |     |             |             | A               |      | B   |     | C   |      | D   |     |           |       |
| in.                             | mm. | in.     | mm. | in.                          | mm. | in.     | mm. | Natural     |             | in.             | mm.  | in. | mm. | in. | mm.  | in. | mm. |           |       |
| <b>KC Series</b>                |     |         |     |                              |     |         |     |             |             |                 |      |     |     |     |      |     |     |           |       |
| .09                             | 2,3 | .06     | 1,5 | .140                         | 3,6 | .135    | 3,4 | <b>4272</b> | KC 09-14    | .33             | 8,4  | .16 | 4,1 | .30 | 7,6  | .06 | 1,5 | TRUSS     |       |
| .09                             | 2,3 | .06     | 1,5 | .141                         | 3,6 | .131    | 3,3 | <b>4273</b> | KC 09-14-1  | .27             | 6,9  | .16 | 4,1 | .40 | 10,2 | .15 | 3,8 | ROUND     | 2     |
| .10                             | 2,5 | .08     | 2,0 | .127                         | 3,2 | .123    | 3,1 | <b>4274</b> | KC 10-13    | .33             | 8,4  | .13 | 3,3 | .27 | 6,9  | .04 | 1,0 | TRUSS     |       |
| .13                             | 3,3 | .08     | 2,0 | .141                         | 3,6 | .131    | 3,3 | <b>4275</b> | KC 13-14    | .37             | 9,4  | .17 | 4,3 | .41 | 10,4 | .10 | 2,5 | PAN       | 1     |
|                                 |     |         |     | .205                         | 5,2 | .175    | 4,4 | <b>4276</b> | KC 13-21    | .43             | 10,9 | .21 | 5,3 | .50 | 12,7 | .25 | 6,4 | ROUND     | 2     |
| .14                             | 3,6 | .07     | 1,8 | .150                         | 3,8 | .125    | 3,2 | <b>4277</b> | KC 13-20    | .44             | 11,2 | .21 | 5,3 | .37 | 9,4  | .05 | 1,3 | BINDING   |       |
|                                 |     |         |     | .150                         | 3,8 | .125    | 3,2 | <b>4278</b> | KC 14-15    | .43             | 10,9 | .16 | 4,1 | .30 | 7,6  | .10 | 2,5 | ROUND     | 1     |
| .16                             | 4,1 | .10     | 2,5 | .192                         | 4,9 | .182    | 4,6 | <b>4279</b> | KC 16-19    | .43             | 10,9 | .21 | 5,3 | .37 | 9,4  | .06 | 1,5 | TRUSS     |       |
|                                 |     |         |     | .200                         | 5,1 | .185    | 4,7 | <b>4282</b> | KC 16-20    | .44             | 11,2 | .21 | 5,3 | .38 | 9,7  | .06 | 1,5 | BINDING   | 2     |
| .21                             | 5,3 | .09     | 2,3 | .220                         | 5,6 | .200    | 5,1 | <b>4283</b> | KC 21-22    | .50             | 12,7 | .24 | 6,1 | .52 | 13,2 | .07 | 1,8 | PAN       |       |
|                                 |     |         |     | .275                         | 7,0 | .240    | 6,1 | <b>4284</b> | KC 21-28    | .63             | 16,0 | .29 | 7,4 | .50 | 12,7 | .05 | 1,3 | BINDING   |       |
| .22                             | 5,6 | .10     | 2,5 | .280                         | 7,1 | .245    | 6,2 | <b>4285</b> | KC 22-28    | .63             | 16,0 | .29 | 7,4 | .86 | 21,8 | .09 | 2,3 | TRUSS     | 1     |
|                                 |     |         |     | .260                         | 6,6 | .240    | 6,1 | <b>4286</b> | KC 22-26    | .46             | 11,7 | .29 | 7,4 | .45 | 11,4 | .06 | 1,5 | PAN       |       |

Standard color natural. Consult Heyco for black and other colors.

- A low cost replacement for screws and rivets.
- Snap into round mounting holes.
- Fasten securely into a variety of materials.
- Ideal for assembling lightweight panels and components.



Style 1



Style 2

## HEYClip™ Nylon Holster Clips

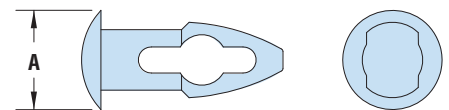
Mounting Hole Diameter/Assembled Panel Thickness Sequence

| MOUNTING HOLE DIA. |     | ASSEMBLED PANEL THICKNESS |     | PART NO.    | DESCRIPTION | HEAD DIAMETER |      |
|--------------------|-----|---------------------------|-----|-------------|-------------|---------------|------|
| in.                | mm. | in.                       | mm. |             |             | in.           | mm.  |
| <b>HHC Series</b>  |     |                           |     |             |             |               |      |
| .219               | 5,6 | .093                      | 2,3 | <b>4287</b> | HHC 09-22   | .34           | 8,6  |
|                    |     | .125                      | 3,3 | <b>4289</b> | HHC 13-22   |               |      |
|                    |     | .156                      | 4,1 | <b>4292</b> | HHC 16-22   |               |      |
|                    |     | .187                      | 4,8 | <b>4294</b> | HHC 19-22   |               |      |
|                    |     | .219                      | 5,5 | <b>4295</b> | HHC 22-22   |               |      |
|                    |     | .250                      | 6,4 | <b>4296</b> | HHC 25-22   |               |      |
|                    |     | .281                      | 7,1 | <b>4297</b> | HHC 28-22   |               |      |
|                    |     | .312                      | 7,9 | <b>4298</b> | HHC 31-22   |               |      |
|                    |     | .343                      | 8,6 | <b>4299</b> | HHC 34-22   |               |      |
|                    |     | .375                      | 9,7 | <b>4322</b> | HHC 38-22   |               |      |
| .250               | 6,4 | .093                      | 2,3 | <b>4288</b> | HHC 09-25   | .50           | 12,7 |
|                    |     | .156                      | 4,1 | <b>4293</b> | HHC 16-25   | .31           | 7,9  |

Standard color natural. Consult Heyco for black and other colors.



- Holster shaped interior allows the part to collapse more completely, for assembly with just **fingertip pressure**.
- Tapered, bullet-style point **slides easily** into any mounting hole.
- Angled panel locking section **takes up slack** to provide for a tight assembly.
- The design allows for a relatively large clip-diameter-to-hole-size ratio, resulting in **higher retention force**.
- Consult Heyco for other mounting hole and panel thickness **variations**.



|                     |                            |
|---------------------|----------------------------|
| Material            | Nylon 6/6                  |
| Flammability Rating | 94V-2                      |
| Temperature Range   | 32°F (0°C) to 185°F (85°C) |

Quick Specs

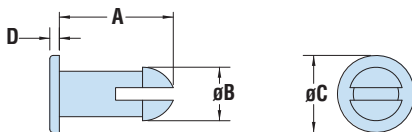


## HEYClip™ Nylon Push-In and Thick Panel Push-In Fasteners



### Assembled Panel Thickness Sequence

- **Slotted leg design** allows for both compression through the mounting hole and then expansion back to original shape—to lock assembled components securely.
- May be disassembled and reused.
- Offer a low cost way to assemble metal, plastic, composite, wood, and other thin gauge materials.
- Snap into mounting holes with fingertip pressure—no tools required.
- Vibration, abrasion, and corrosion resistant.



| ASSEMBLED PANEL THICKNESS |     | MOUNTING HOLE DIA. |     | PART NO. |            | DESCRIPTION | PART DIMENSIONS |     |             |     |             |     |               |  |
|---------------------------|-----|--------------------|-----|----------|------------|-------------|-----------------|-----|-------------|-----|-------------|-----|---------------|--|
| in.                       | mm. | in.                | mm. | Natural  | NEW! Black |             | A Length        |     | B Clip Dia. |     | C Head Dia. |     | D Head Height |  |
|                           |     |                    |     |          |            | in.         | mm.             | in. | mm.         | in. | mm.         | in. | mm.           |  |

#### PF Series For combined Panel Thickness ≤ .250" (6,4 mm)

|     |     |      |     |             |              |             |     |      |     |     |     |      |     |     |
|-----|-----|------|-----|-------------|--------------|-------------|-----|------|-----|-----|-----|------|-----|-----|
| .07 | 1,7 | .165 | 4,2 | <b>0351</b> | <b>0351B</b> | PF 065-165  | .20 | 5,1  | .20 | 5,1 | .34 | 8,7  | .12 | 3,1 |
| .09 | 2,4 | .093 | 2,4 | <b>0340</b> | <b>0340B</b> | PF 093-093* | .17 | 4,3  | .11 | 2,7 | .28 | 7,1  | .03 | 0,7 |
| .10 | 2,5 | .245 | 6,2 | <b>0384</b> | <b>0384B</b> | PF 098-245  | .27 | 6,8  | .28 | 7,1 | .50 | 12,7 | .06 | 1,4 |
| .12 | 2,9 | .125 | 3,2 | <b>0339</b> | <b>0339B</b> | PF 115-125  | .20 | 5,1  | .15 | 3,7 | .25 | 6,4  | .04 | 1,0 |
| .12 | 3,1 | .089 | 2,3 | <b>0341</b> | <b>0341B</b> | PF 121-089* | .21 | 5,3  | .15 | 3,7 | .31 | 7,9  | .04 | 1,0 |
|     |     | .115 | 2,9 | <b>0347</b> | <b>0347B</b> | PF 121-115  | .25 | 6,2  | .14 | 3,6 | .20 | 5,2  |     |     |
|     |     | .200 | 5,1 | <b>0358</b> | <b>0358B</b> | PF 121-200  | .27 | 6,9  | .24 | 6,1 | .47 | 11,9 |     |     |
| .13 | 3,4 | .175 | 4,4 | <b>0350</b> | <b>0350B</b> | PF 133-175  | .27 | 6,9  | .20 | 5,1 | .34 | 8,7  | .04 | 1,0 |
| .16 | 4,0 | .115 | 2,9 | <b>0343</b> | <b>0343B</b> | PF 156-115  | .29 | 7,4  | .14 | 3,6 | .20 | 5,2  | .04 | 1,0 |
|     |     | .210 | 5,3 | <b>0360</b> | <b>0360B</b> | PF 156-210  | .31 | 7,8  | .23 | 5,8 | .47 | 11,9 | .05 | 1,3 |
| .17 | 4,3 | .260 | 6,6 | <b>0370</b> | <b>0370B</b> | PF 171-260  | .36 | 9,1  | .30 | 7,5 | .59 | 15,1 | .06 | 1,5 |
| .19 | 4,8 | .155 | 3,9 | <b>0342</b> | <b>0342B</b> | PF 190-155  | .28 | 7,1  | .18 | 4,6 | .20 | 5,2  | .04 | 1,0 |
| .24 | 6,0 | .200 | 5,1 | <b>0352</b> | <b>0352B</b> | PF 237-200  | .39 | 9,8  | .24 | 6,0 | .47 | 11,9 | .05 | 1,3 |
| .25 | 6,4 | .200 | 5,1 | <b>0353</b> | <b>0353B</b> | PF 250-200  | .42 | 10,8 | .22 | 5,7 | .34 | 8,7  | .06 | 1,5 |
|     |     | .218 | 5,5 | <b>0362</b> | <b>0362B</b> | PF 250-218  | .36 | 9,1  | .28 | 7,2 | .41 | 10,3 | .05 | 1,1 |
|     |     | .240 | 6,1 | <b>0371</b> | <b>0371B</b> | PF 250-240  | .43 | 10,9 | .30 | 7,5 | .59 | 15,1 | .06 | 1,5 |

#### PFT Series For combined Panel Thickness > .250" (6,4 mm)

|      |      |      |     |             |   |            |      |      |     |      |     |      |     |     |
|------|------|------|-----|-------------|---|------------|------|------|-----|------|-----|------|-----|-----|
| .27  | 6,9  | .155 | 4,0 | <b>0303</b> | - | PFT 27-16  | .40  | 10,0 | .21 | 5,3  | .38 | 9,5  | .07 | 1,7 |
| .27  | 6,9  | .240 | 6,1 | <b>0308</b> | - | PFT 27-24  | .46  | 11,7 | .30 | 7,6  | .45 | 11,4 | .06 | 1,5 |
| .28  | 7,0  | .240 | 6,1 | <b>0310</b> | - | PFT 28-24  | .46  | 11,7 | .30 | 7,6  | .45 | 11,4 | .04 | 1,0 |
| .32  | 8,1  | .157 | 4,0 | <b>0312</b> | - | PFT 32-16  | .43  | 10,9 | .21 | 5,3  | .39 | 9,9  | .05 | 1,3 |
| .32  | 8,1  | .118 | 3,0 | <b>0319</b> | - | PFT 32-12  | .40  | 10,2 | .15 | 3,7  | .23 | 5,9  | .03 | 0,8 |
| .34  | 8,6  | .174 | 4,4 | <b>0322</b> | - | PFT 34-17  | .51  | 13,0 | .25 | 6,4  | .33 | 8,4  | .07 | 1,8 |
| .37  | 9,4  | .245 | 6,2 | <b>0323</b> | - | PFT 37-25  | .55  | 14,0 | .30 | 7,6  | .59 | 15,0 | .13 | 3,3 |
| .38  | 9,7  | .200 | 5,1 | <b>0361</b> | - | PFT 38-20  | .51  | 13,0 | .24 | 6,0  | .34 | 8,7  | .04 | 1,0 |
|      |      | .240 | 6,1 | <b>0327</b> | - | PFT 38-24  | .56  | 14,2 | .30 | 7,6  | .59 | 15,0 | .06 | 1,5 |
| .40  | 10,2 | .135 | 3,4 | <b>0329</b> | - | PFT 40-14  | .54  | 13,7 | .16 | 4,1  | .28 | 7,1  | .08 | 2,0 |
| .41  | 10,3 | .275 | 7,0 | <b>0330</b> | - | PFT 41-28  | .57  | 14,5 | .32 | 8,1  | .59 | 15,0 | .06 | 1,5 |
| .43  | 10,8 | .135 | 3,4 | <b>0331</b> | - | PFT 43-14  | .64  | 16,3 | .16 | 4,1  | .42 | 10,7 | .09 | 2,3 |
| .48  | 12,2 | .240 | 6,1 | <b>0332</b> | - | PFT 48-24  | .67  | 17,0 | .30 | 7,6  | .59 | 15,0 | .06 | 1,5 |
| .55  | 14,0 | .180 | 4,6 | <b>0333</b> | - | PFT 55-18  | .71  | 18,0 | .23 | 5,8  | .35 | 8,9  | .07 | 1,8 |
| .70  | 17,8 | .245 | 6,2 | <b>0334</b> | - | PFT 70-25  | .90  | 22,9 | .34 | 8,6  | .50 | 12,7 | .08 | 2,0 |
| .88  | 22,4 | .246 | 6,3 | <b>0335</b> | - | PFT 88-24  | 1.12 | 28,5 | .28 | 7,1  | .38 | 9,7  | .06 | 1,5 |
|      |      | .250 | 6,4 | <b>0336</b> | - | PFT 88-25  | 1.13 | 28,7 | .31 | 7,9  | .38 | 9,7  | .06 | 1,5 |
| .89  | 22,6 | .260 | 6,6 | <b>0337</b> | - | PFT 89-26  | .95  | 24,1 | .34 | 8,6  | .41 | 10,4 | .07 | 1,8 |
| 1.00 | 25,4 | .345 | 8,9 | <b>0338</b> | - | PFT 100-35 | 1.38 | 35,1 | .45 | 11,4 | .50 | 12,7 | .07 | 1,8 |
| 1.02 | 25,9 | .350 | 8,9 | <b>0344</b> | - | PFT 102-35 | 1.40 | 35,6 | .48 | 12,2 | .50 | 12,7 | .06 | 1,5 |

Standard color natural. Consult Heyco for black and other colors.

\*No slot.

Quick Specs

|                     |                            |
|---------------------|----------------------------|
| Material            | Nylon 6/6                  |
| Flammability Rating | 94V-2                      |
| Temperature Range   | 32°F (0°C) to 185°F (85°C) |

“Stay Connected with” HEYware



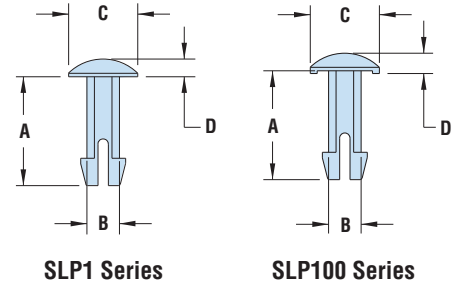
## HEYClip™ Nylon Snap Lock Pins

Assembled Panel Thickness Sequence

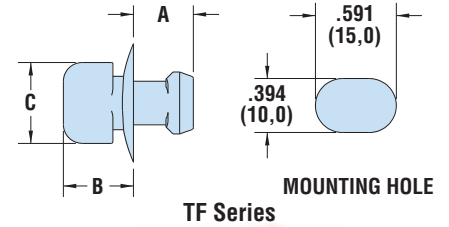


| MOUNTING HOLE DIA.              |      | ASSEMBLED PANEL THICKNESS |          | PART NO.     | DESCRIPTION | PART DIMENSIONS |      |             |     |             |     |               |     |
|---------------------------------|------|---------------------------|----------|--------------|-------------|-----------------|------|-------------|-----|-------------|-----|---------------|-----|
|                                 |      |                           |          |              |             | A Length        |      | B Clip Dia. |     | C Head Dia. |     | D Head Height |     |
| in.                             | mm.  | in.                       | mm.      | Natural      |             | in.             | mm.  | in.         | mm. | in.         | mm. | in.           | mm. |
| <b>SLP1 Series - Flush Head</b> |      |                           |          |              |             |                 |      |             |     |             |     |               |     |
| .098                            | 2,5  | .177                      | 4,5      | <b>12040</b> | SLP1-177    | .26             | 6,6  |             |     |             |     |               |     |
|                                 |      | .221                      | 5,6      | <b>12041</b> | SLP1-221    | .30             | 7,6  |             |     |             |     |               |     |
|                                 |      | .236                      | 6,0      | <b>12042</b> | SLP1-236    | .31             | 7,9  |             |     |             |     |               |     |
|                                 |      | .245                      | 6,2      | <b>12043</b> | SLP1-245    | .32             | 8,1  |             |     |             |     |               |     |
|                                 |      | .307                      | 7,8      | <b>12044</b> | SLP1-307    | .39             | 9,9  |             |     |             |     |               |     |
|                                 |      | .316                      | 8,0      | <b>12045</b> | SLP1-316    | .40             | 10,0 | .09         | 2,4 | .20         | 5,1 | .05           | 1,3 |
|                                 |      | .330                      | 8,4      | <b>12046</b> | SLP1-330    | .41             | 10,4 |             |     |             |     |               |     |
|                                 |      | .413                      | 10,5     | <b>12047</b> | SLP1-413    | .49             | 12,4 |             |     |             |     |               |     |
|                                 |      | .638                      | 16,2     | <b>12048</b> | SLP1-638    | .72             | 18,3 |             |     |             |     |               |     |
|                                 |      | .660                      | 16,8     | <b>12049</b> | SLP1-660    | .74             | 18,8 |             |     |             |     |               |     |
| .701                            | 17,8 | <b>12050</b>              | SLP1-701 | .78          | 19,8        |                 |      |             |     |             |     |               |     |

- Used to fix connectors to the printed circuit board prior to wave soldering.



| MOUNTING HOLE DIA.                    |      | ASSEMBLED PANEL THICKNESS |            | PART NO.     | DESCRIPTION | PART DIMENSIONS |      |             |     |             |     |               |     |
|---------------------------------------|------|---------------------------|------------|--------------|-------------|-----------------|------|-------------|-----|-------------|-----|---------------|-----|
|                                       |      |                           |            |              |             | A Length        |      | B Clip Dia. |     | C Head Dia. |     | D Head Height |     |
| in.                                   | mm.  | in.                       | mm.        | Natural      |             | in.             | mm.  | in.         | mm. | in.         | mm. | in.           | mm. |
| <b>SLP100 Series - Lip Under Head</b> |      |                           |            |              |             |                 |      |             |     |             |     |               |     |
| .098                                  | 2,5  | .177                      | 4,5        | <b>12051</b> | SLP100-177  | .26             | 6,6  |             |     |             |     |               |     |
|                                       |      | .221                      | 5,6        | <b>12052</b> | SLP100-221  | .30             | 7,6  |             |     |             |     |               |     |
|                                       |      | .236                      | 6,0        | <b>12053</b> | SLP100-236  | .31             | 7,9  |             |     |             |     |               |     |
|                                       |      | .245                      | 6,2        | <b>12054</b> | SLP100-245  | .32             | 8,1  |             |     |             |     |               |     |
|                                       |      | .307                      | 7,8        | <b>12055</b> | SLP100-307  | .39             | 9,9  |             |     |             |     |               |     |
|                                       |      | .316                      | 8,0        | <b>12056</b> | SLP100-316  | .40             | 10,0 | .09         | 2,4 | .20         | 5,1 | .06           | 1,5 |
|                                       |      | .330                      | 8,4        | <b>12057</b> | SLP100-330  | .41             | 10,4 |             |     |             |     |               |     |
|                                       |      | .413                      | 10,5       | <b>12058</b> | SLP100-413  | .49             | 12,4 |             |     |             |     |               |     |
|                                       |      | .638                      | 16,2       | <b>12059</b> | SLP100-638  | .72             | 18,3 |             |     |             |     |               |     |
|                                       |      | .660                      | 16,8       | <b>12060</b> | SLP100-660  | .74             | 18,8 |             |     |             |     |               |     |
| .701                                  | 17,8 | <b>12061</b>              | SLP100-701 | .78          | 19,8        |                 |      |             |     |             |     |               |     |



Standard color natural. Consult Heyco for black and other colors.

## HEYClip™ Turn Fastener

| MOUNTING SLOT DIA. |      | WILL FIT THESE PANELS ASSEMBLED PANEL THICKNESS |      | PART NO. | DESCRIPTION | PART DIMENSIONS |            |               |      |               |      |     |      |
|--------------------|------|---|------|----------|-------------|-----------------|------------|---------------|------|---------------|------|-----|------|
|                    |      | Min.  | Max. |          |             | A Length        |            | B Head Height |      | C Head Length |      |     |      |
| in.                | mm.  | in.   | mm.  | Black    |             | in.             | mm.        | in.           | mm.  | in.           | mm.  |     |      |
| <b>TF Series</b>   |      |   |      |          |             |                 |            |               |      |               |      |     |      |
| .394               | 10,0 | .24   | 6,0  | .28      | 7,0         | <b>9087</b>     | TF 394-236 | .44           | 11,1 | .51           | 13,0 | .59 | 15,0 |

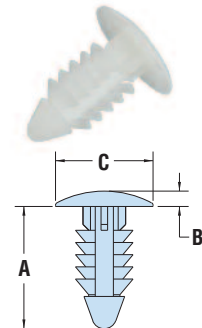
Standard color black.

- For use with combined panel thicknesses between .24" (6,0 mm) and .28" (7,0 mm).
- Part Description Key: TF X-YYY where XXX = Mounting Hole Diameter (inches) and YYY = minimum Panel Thickness (inches)

## HEYClip™ Nylon Pawl Locks

| MOUNTING SLOT DIA. |     | WILL FIT THESE PANELS ASSEMBLED PANEL THICKNESS |      | PART NO. | DESCRIPTION | PART DIMENSIONS |               |               |      |               |     |     |      |
|--------------------|-----|---|------|----------|-------------|-----------------|---------------|---------------|------|---------------|-----|-----|------|
|                    |     | Min.  | Max. |          |             | A Length        |               | B Head Height |      | C Head Length |     |     |      |
| in.                | mm. | in.   | mm.  | in.      | mm.         | in.             | mm.           | in.           | mm.  | in.           | mm. |     |      |
| .250               | 6,4 | .03   | 0,8  | .29      | 7,4         | <b>10677B</b>   | HPFP-1 BLACK  | .41           | 10,4 | .08           | 2,0 | .72 | 18,3 |
|                    |     | .16   | 4,0  | .55      | 13,9        | <b>10676</b>    | HPL-1 NATURAL | .63           | 15,9 | .08           | 2,0 | .50 | 12,7 |

|                     |                               |
|---------------------|-------------------------------|
| Material            | Nylon 6/6                     |
| Flammability Rating | 94V-2                         |
| Temperature Range   | -.4°F (-18°C) to 185°F (85°C) |



Quick Specs