

“Stay Connected” with



Liquid Tight Cordgrips

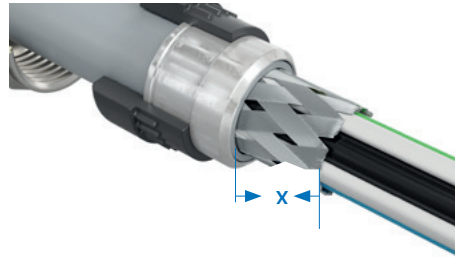
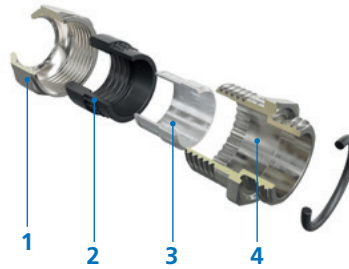
a PennEngineering® Company



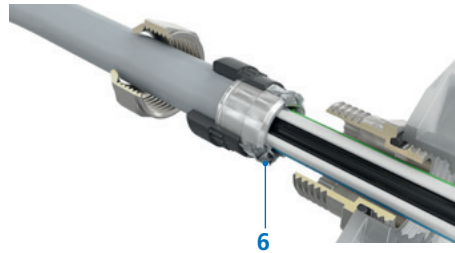
Heyco®-Tite EMC Brass Liquid Tight Cordgrips

EMC Nickel-Plated Brass with Contact Sleeve Installation Instructions

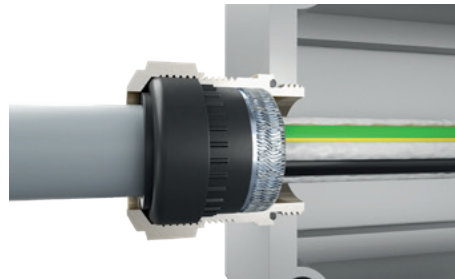
- 1 Screw the lower part (4) of the cable gland into the housing.
- 2 Push compression nut (1), sealing insert (2) and contact sleeve (3) over the cable.
- 3 Trim outer sheath of the cable to the desired length.
 - 4 Trim shield braiding or shield foil to the the approximate length of the contact sleeve, X.
- 5 Push contact sleeve, sealing insert and compression nut to the end of the sheath.



- 6 Turn back the shield braiding (6) or shield foil over the contact sleeve and cut off the protruding shield material.



- 7 Feed cable through the already mounted lower part of the cable gland.
- 8 Insert sealing insert and contact sleeve fully and cleanly into the lower part.



- 9 Tighten compression nut to the lower part until the sealing insert bulges slightly between the compression nut and the cable. Please refer to the instruction sheet with details of installation torques on our website, Heyco.com



Installation only by competent technicians with suitable training in the field of electro-technology! If the installer does not have the required specialist knowledge, this can result in improper installation, jeopardizing the safety of the product user.

